

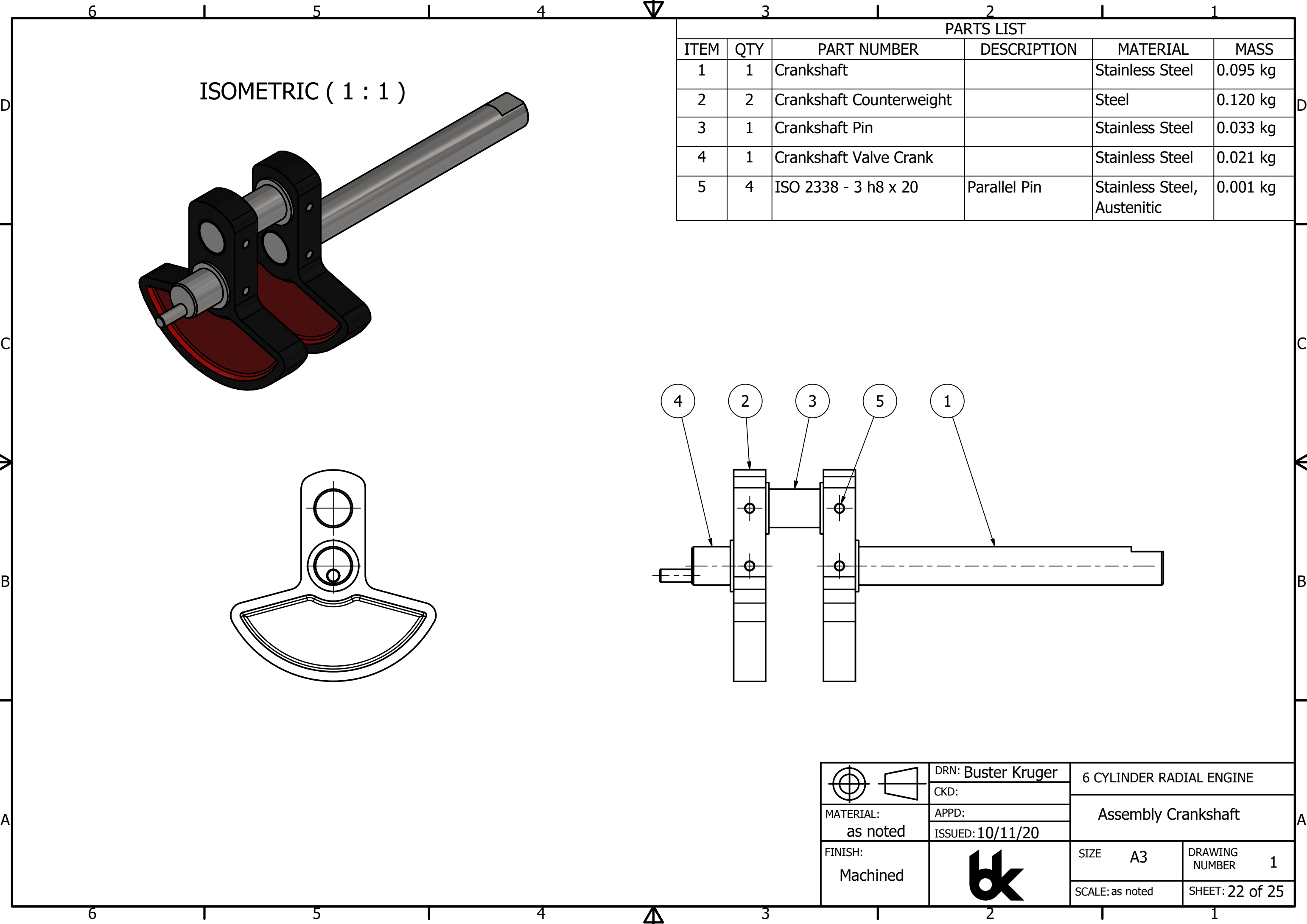
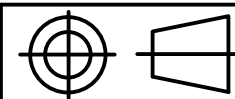



PARTS LIST			
ITEM	QTY	PART NUMBER	DESCRIPTION
1	1	Bearing Stand	
2	6	Assembly Piston	
3	1	Valve Housing	
4	1	Parker Hose Barb 125HBL	
5	1	Valve	
6	6	ISO 4762 - M6 x 45	Hex head cap screw
7	1	Crankcase	
8	1	Connecting Rod Hub	
9	6	Connecting Rod	
10	6	Cylinder Assembly	
11	1	Crankcase Gasket	
12	6	EN ISO 7045 - M6 x 16	Pan head screw
13	1	Flywheel	
14	1	Crankcase Cover	
15	1	DIN 472 - 28 x 1.2	Retaining Ring
16	1	Assembly Crankshaft	
17	3	DIN 625 SKF - SKF 6001	Ball bearings
18	6	ISO 2338 - 5 x 16	Parallel pin
19	1	Bearing Holder	
20	1	Stand	

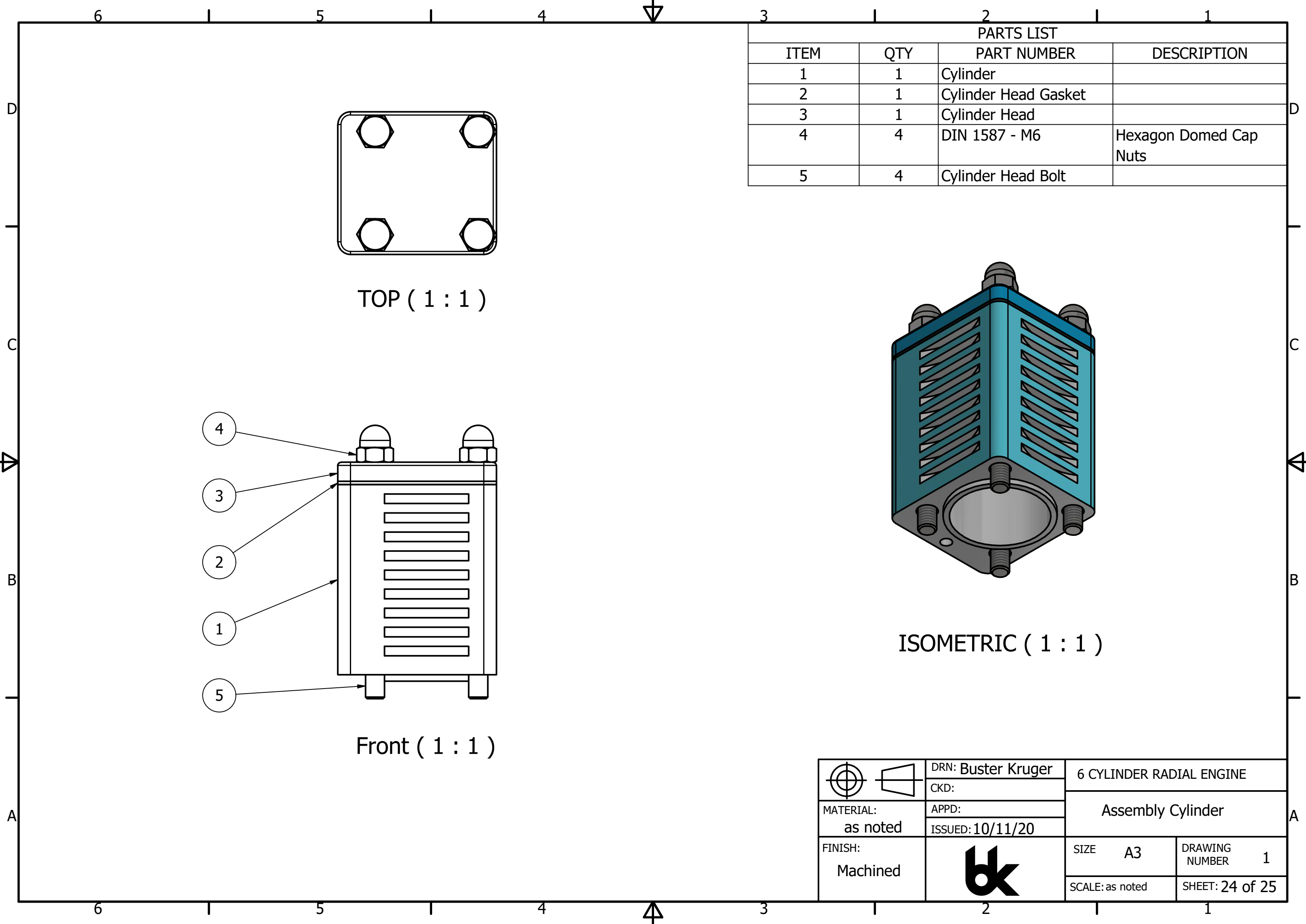
 MATERIAL: as noted	DRN: Buster Kruger	6 CYLINDER RADIAL ENGINE	
	CKD:	Assembly Radial Engine	
	ISSUED: 10/11/20		
FINISH: as noted		SIZE A3	DRAWING NUMBER 1
		SCALE: 1:2.5	SHEET: 25 of 25


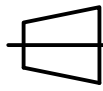



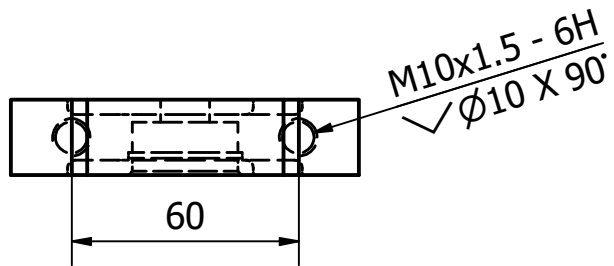
PARTS LIST					
ITEM	QTY	PART NUMBER	DESCRIPTION	MATERIAL	MASS
1	1	Crankshaft		Stainless Steel	0.095 kg
2	2	Crankshaft Counterweight		Steel	0.120 kg
3	1	Crankshaft Pin		Stainless Steel	0.033 kg
4	1	Crankshaft Valve Crank		Stainless Steel	0.021 kg
5	4	ISO 2338 - 3 h8 x 20	Parallel Pin	Stainless Steel, Austenitic	0.001 kg

	DRN: Buster Kruger	6 CYLINDER RADIAL ENGINE	
	CKD:	Assembly Crankshaft	
	APPD:		
MATERIAL: as noted	ISSUED: 10/11/20	SIZE A3	DRAWING NUMBER 1
FINISH: Machined		SCALE: as noted	SHEET: 22 of 25

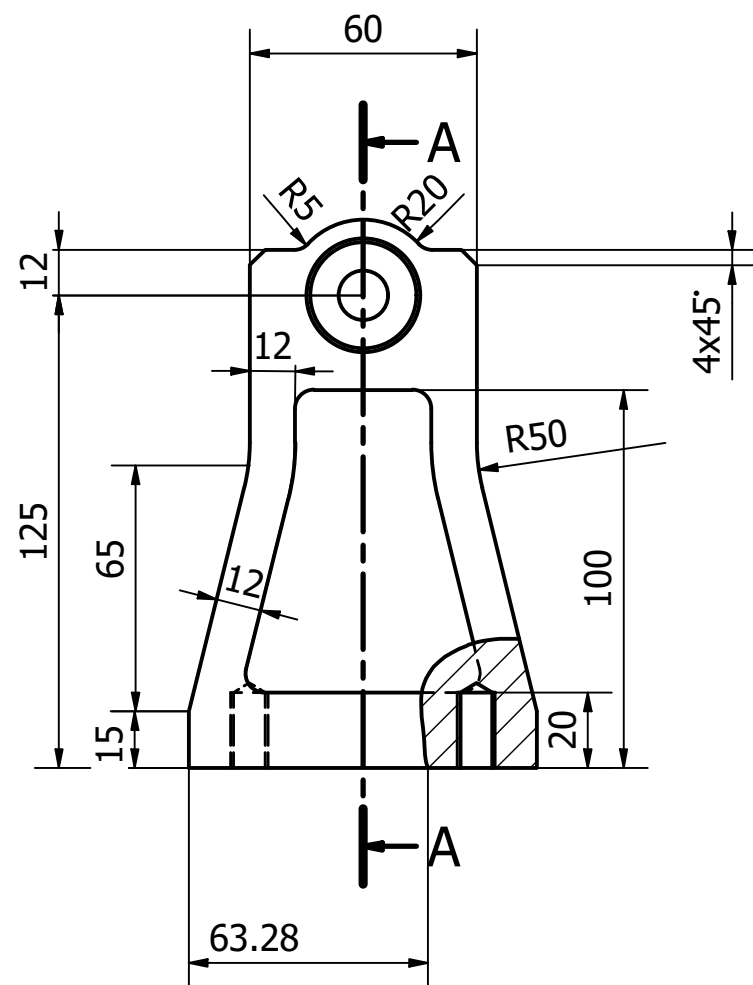




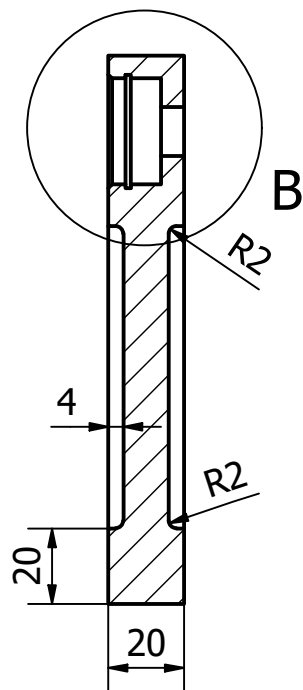
 	DRN: Buster Kruger	6 CYLINDER RADIAL ENGINE	
	CKD:	Assembly Cylinder	
	APPD:		
MATERIAL: as noted	ISSUED: 10/11/20	SIZE A3	DRAWING NUMBER 1
FINISH: Machined		SCALE: as noted	SHEET: 24 of 25



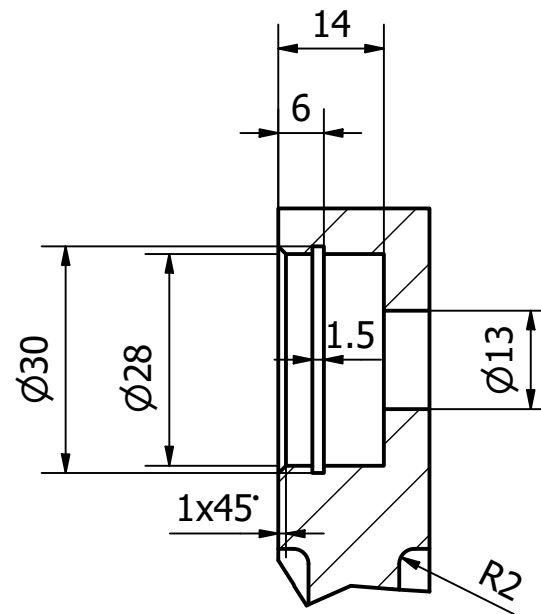
TOP ( 1 : 2 )



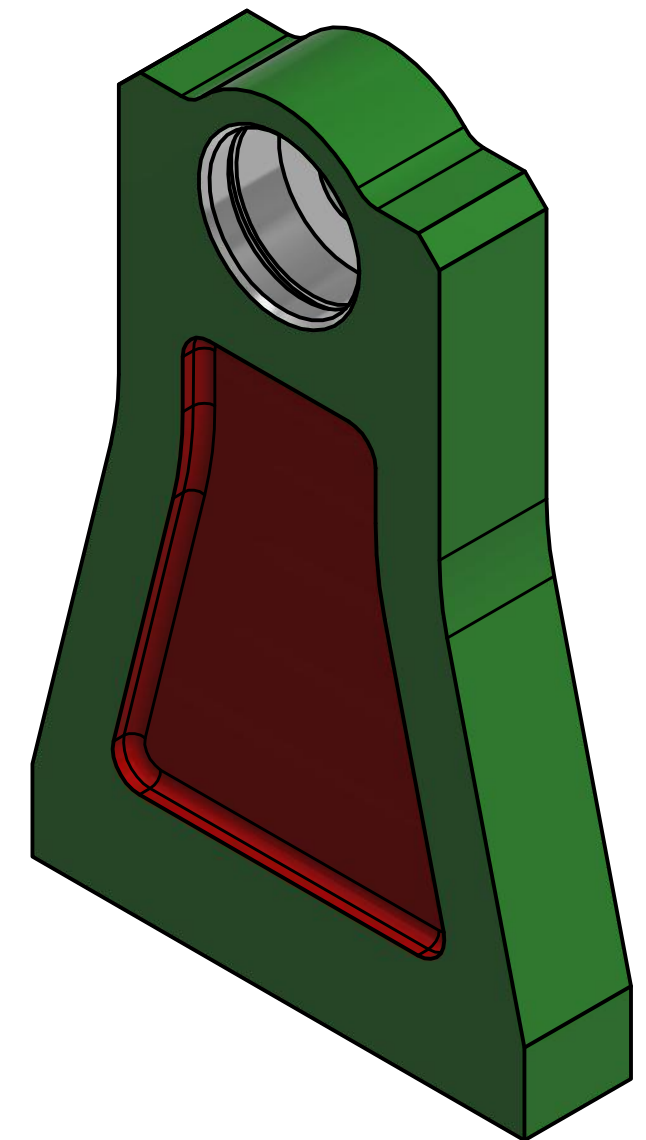
FRONT VIEW ( 1 : 2 )



SECTION A-A

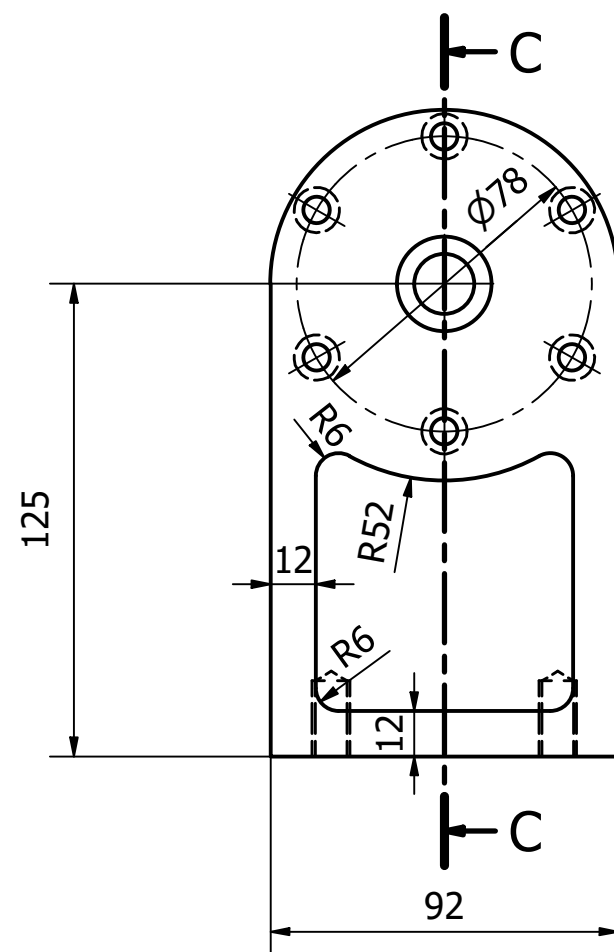


B ( 1 : 1 )

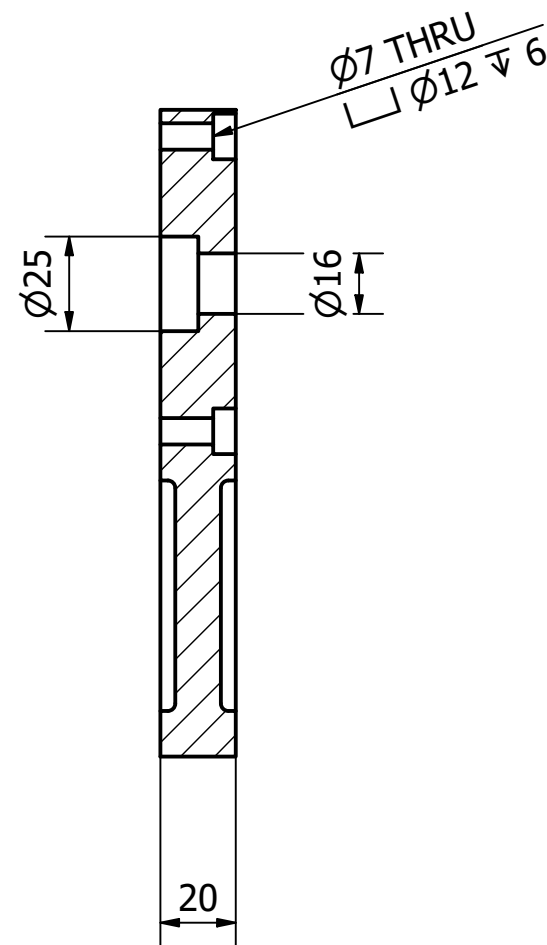


ISOMETRIC ( 1 : 1 )

	DRN: Buster Kruger	6 CYLINDER RADIAL ENGINE	
	CKD:	Bearing Holder	
	APPD:		
MATERIAL: Aluminium	ISSUED: 10/11/20	SIZE A3	DRAWING NUMBER 1
FINISH: Machined		SCALE: as noted	SHEET: 1 of 25

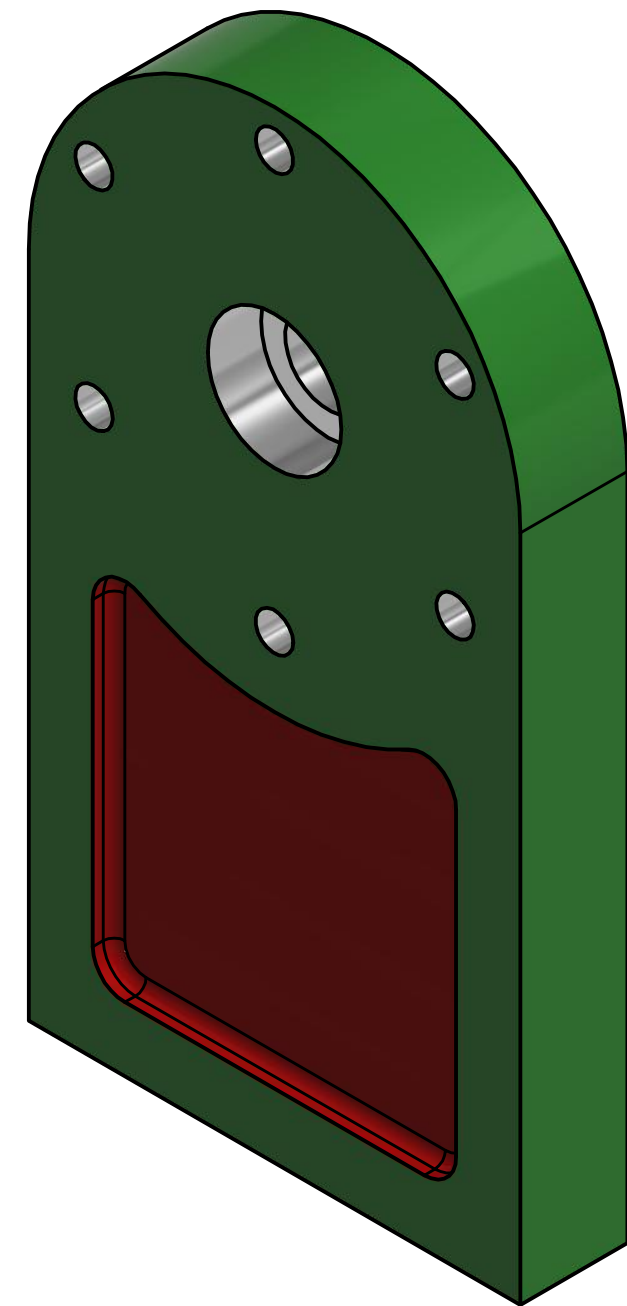


FRONT ( 1 : 2 )

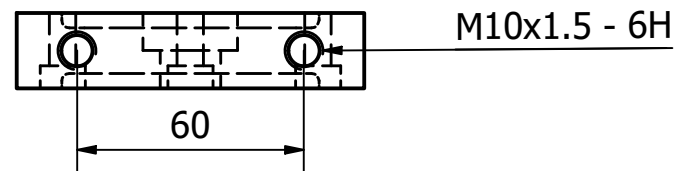


SECTION C-C

Bearing Stand



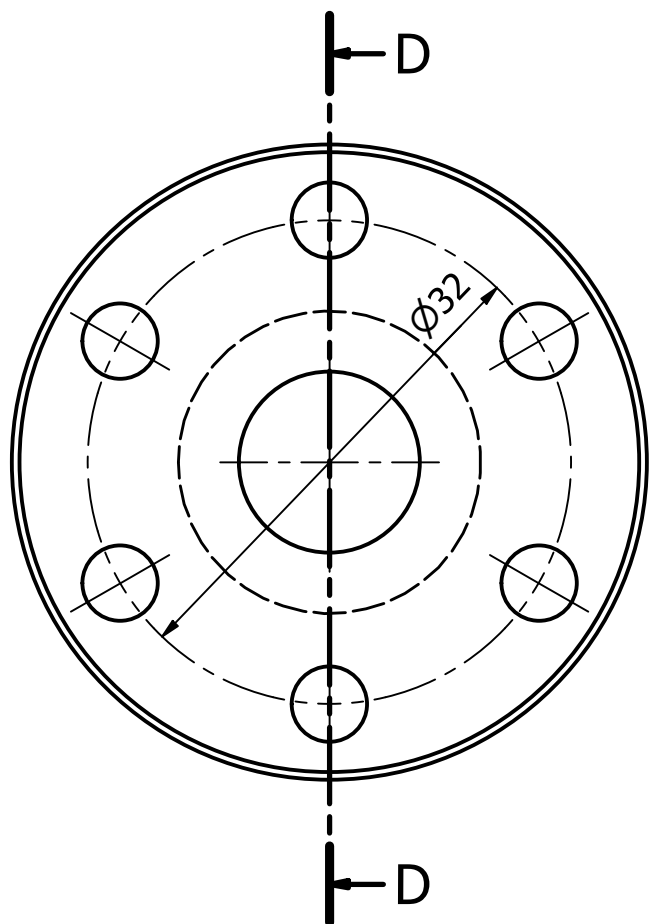
ISOMETRIC ( 1 : 1 )



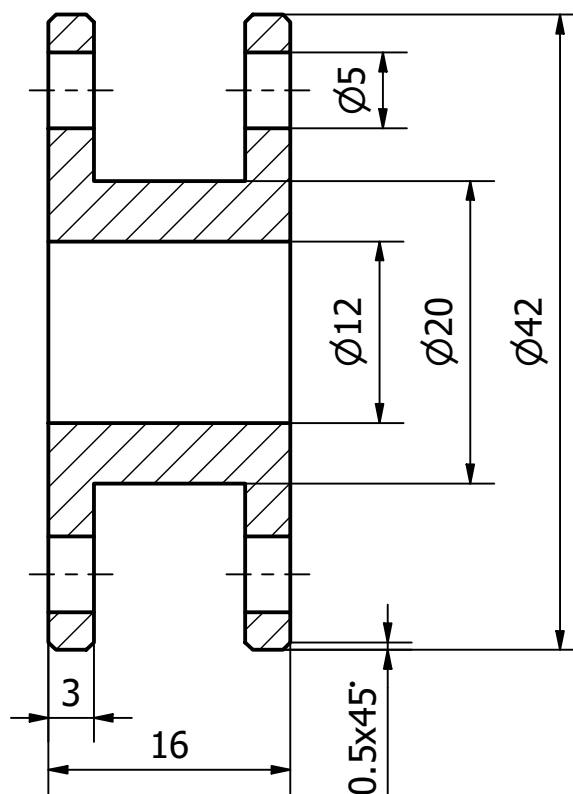
BOTTOM ( 1 : 2 )

	DRN: Buster Kruger	6 CYLINDER RADIAL ENGINE	
	CKD:	Bearing Stand	
	APPD:		
MATERIAL: Aluminium	ISSUED: 10/11/20	SIZE A3	DRAWING NUMBER 1
FINISH: Machined		SCALE: as noted	SHEET: 2 of 25

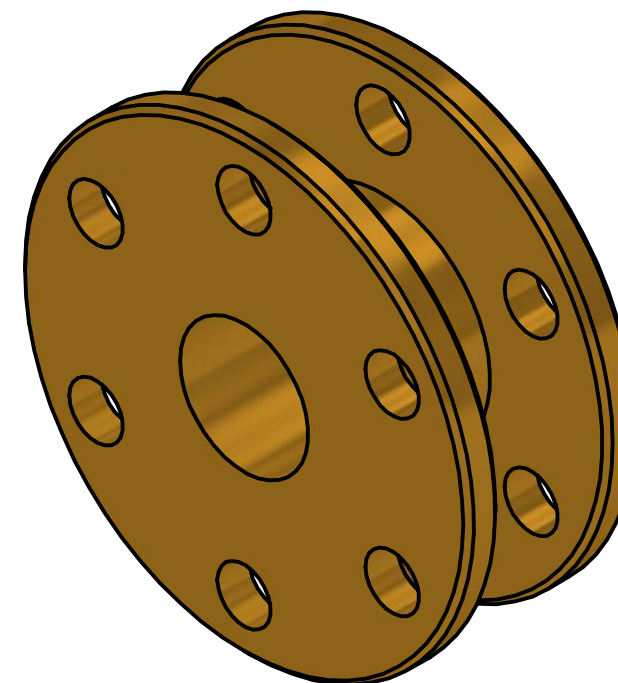




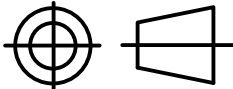

FRONT ( 2 : 1 )

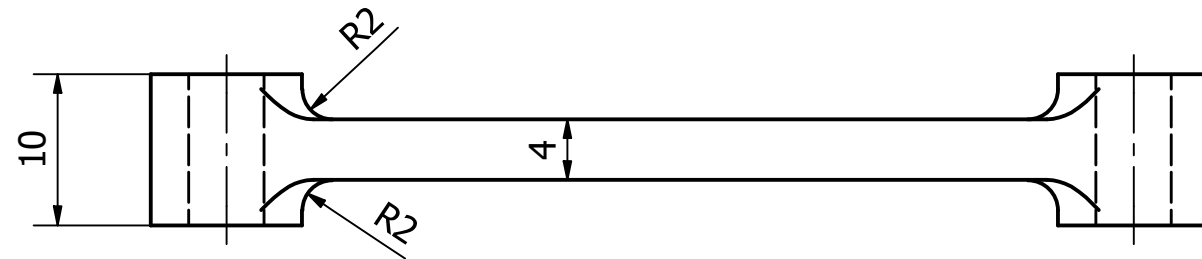


SECTION D-D ( 2 : 1 )

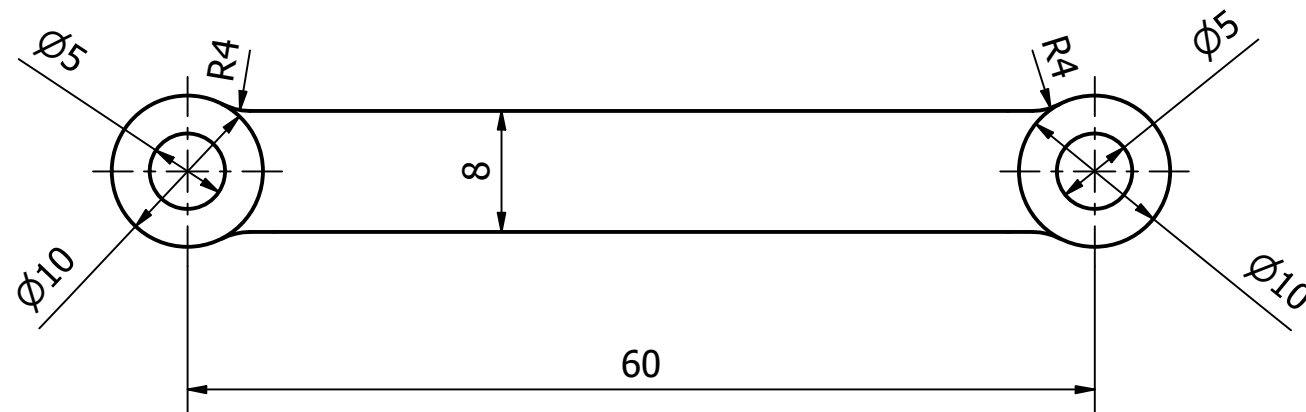


ISOMETRIC ( 2 : 1 )

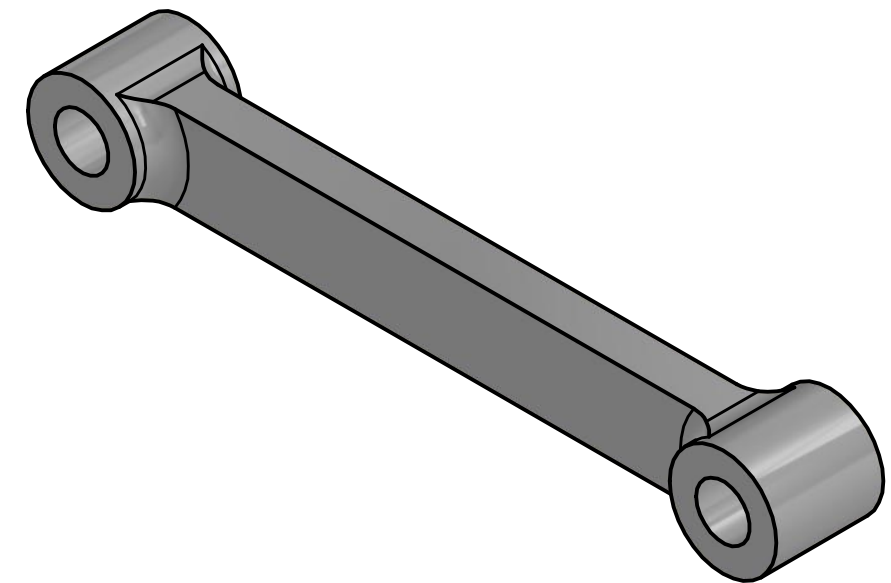
	DRN: Buster Kruger		6 CYLINDER RADIAL ENGINE	
	CKD:			
MATERIAL: Brass	APPD:		Connecting Rod Hub	
	ISSUED: 10/11/20			
FINISH: Machined			SIZE A3	DRAWING NUMBER 1
			SCALE: as noted	SHEET: 3 of 25



TOP ( 2 : 1 )

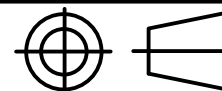



FRONT ( 2 : 1 )

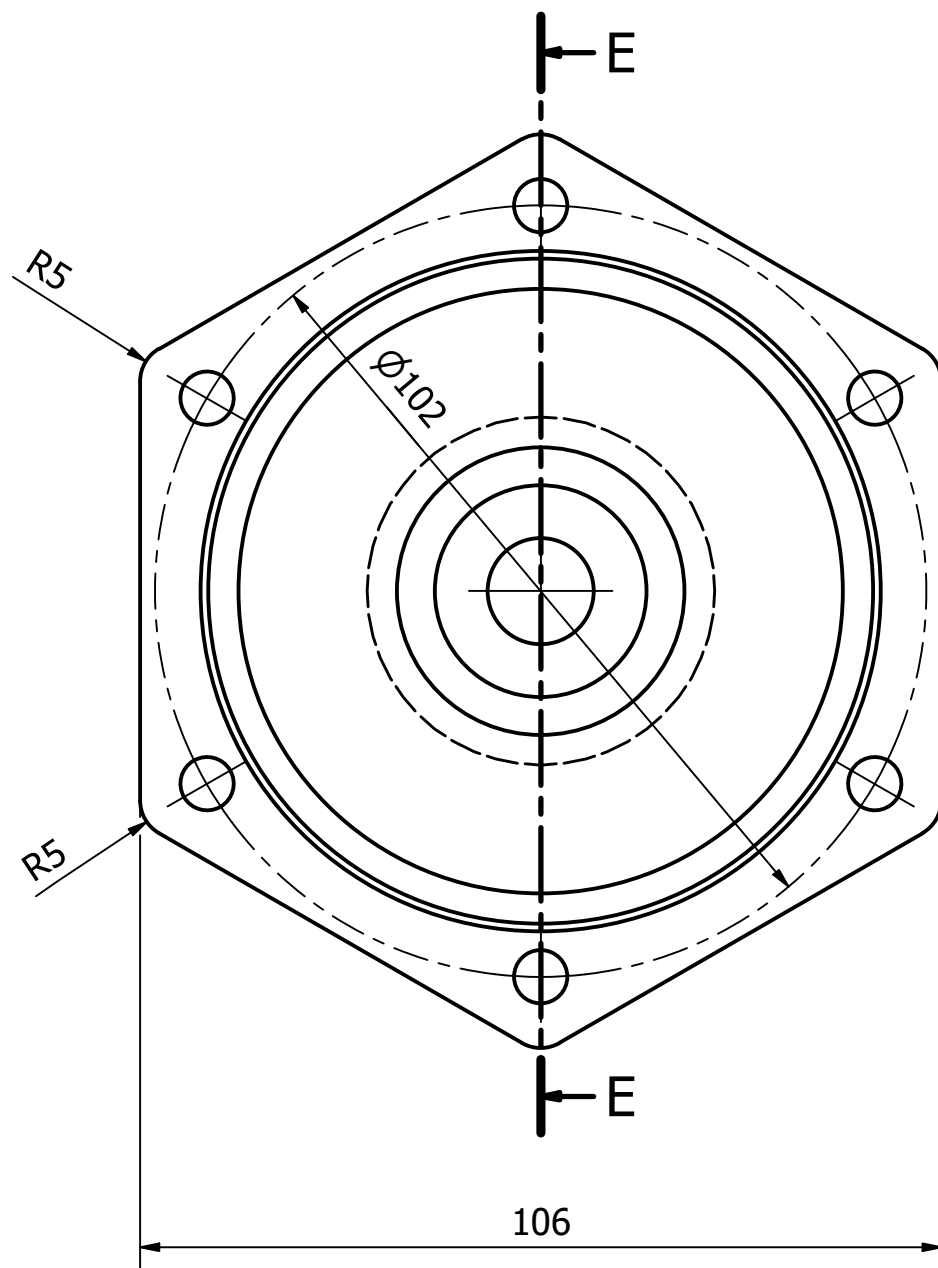


ISOMETRIC ( 2 : 1 )

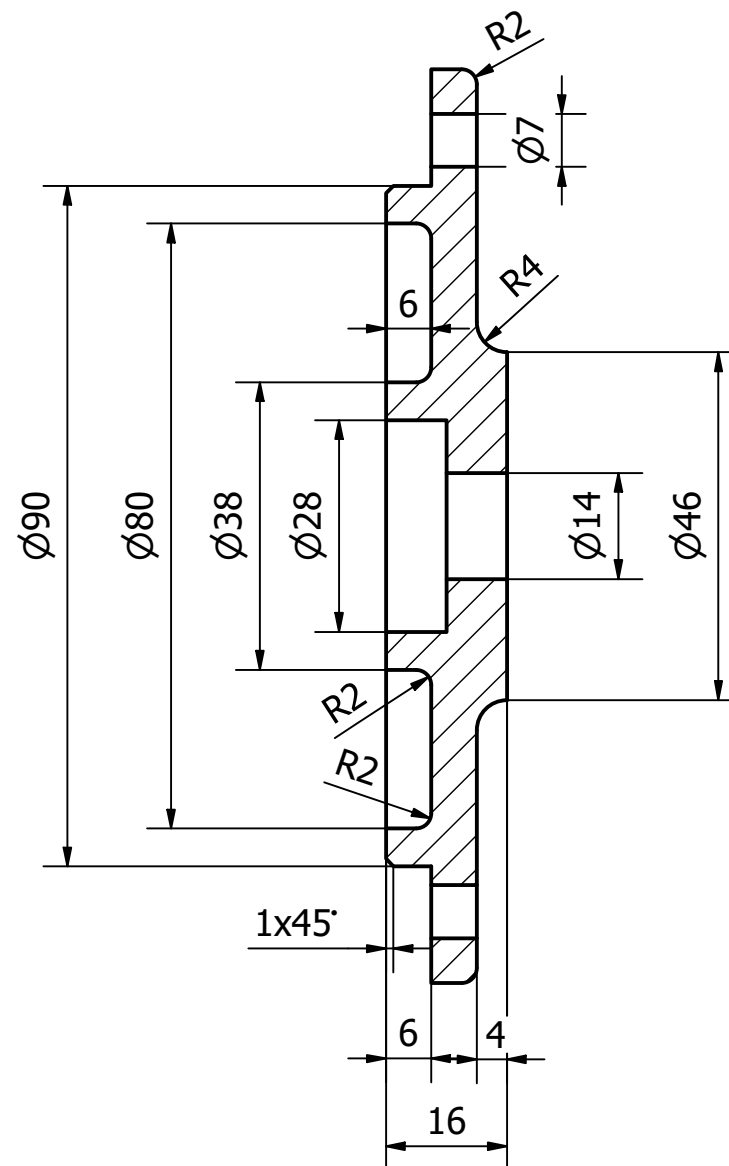
Connecting Rod

	DRN: Buster Kruger	6 CYLINDER RADIAL ENGINE	
	CKD:	Connecting Rod	
	APPD:		
MATERIAL: Aluminium	ISSUED: 10/11/20	SIZE A3	DRAWING NUMBER 1
FINISH: Machined		SCALE: as noted	SHEET: 4 of 25

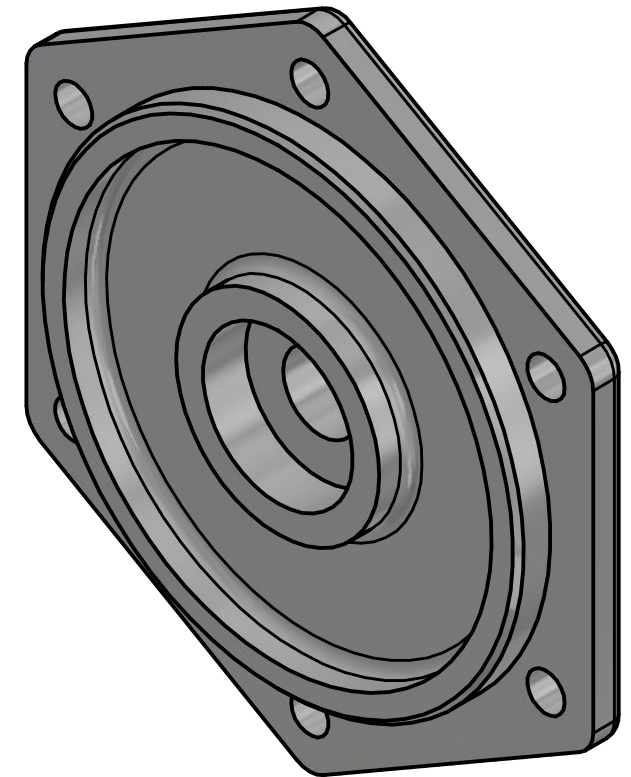




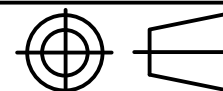

FRONT ( 1 : 1 )

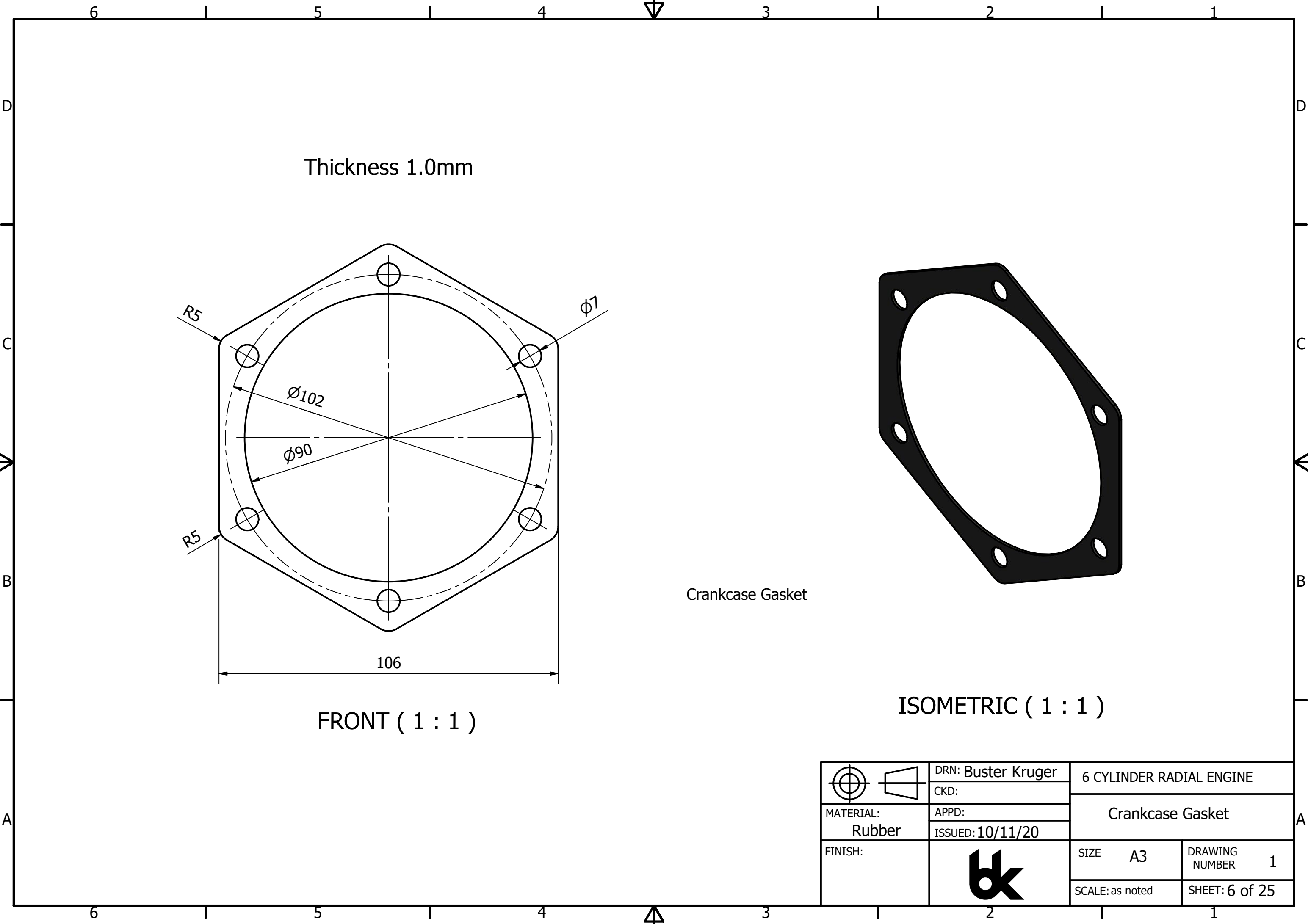


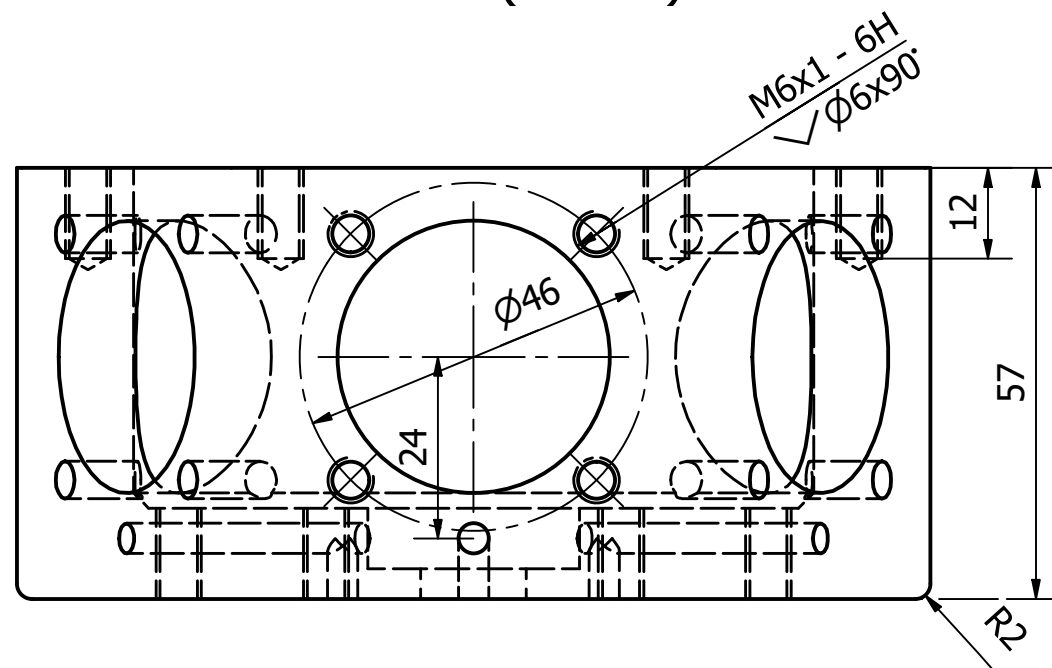
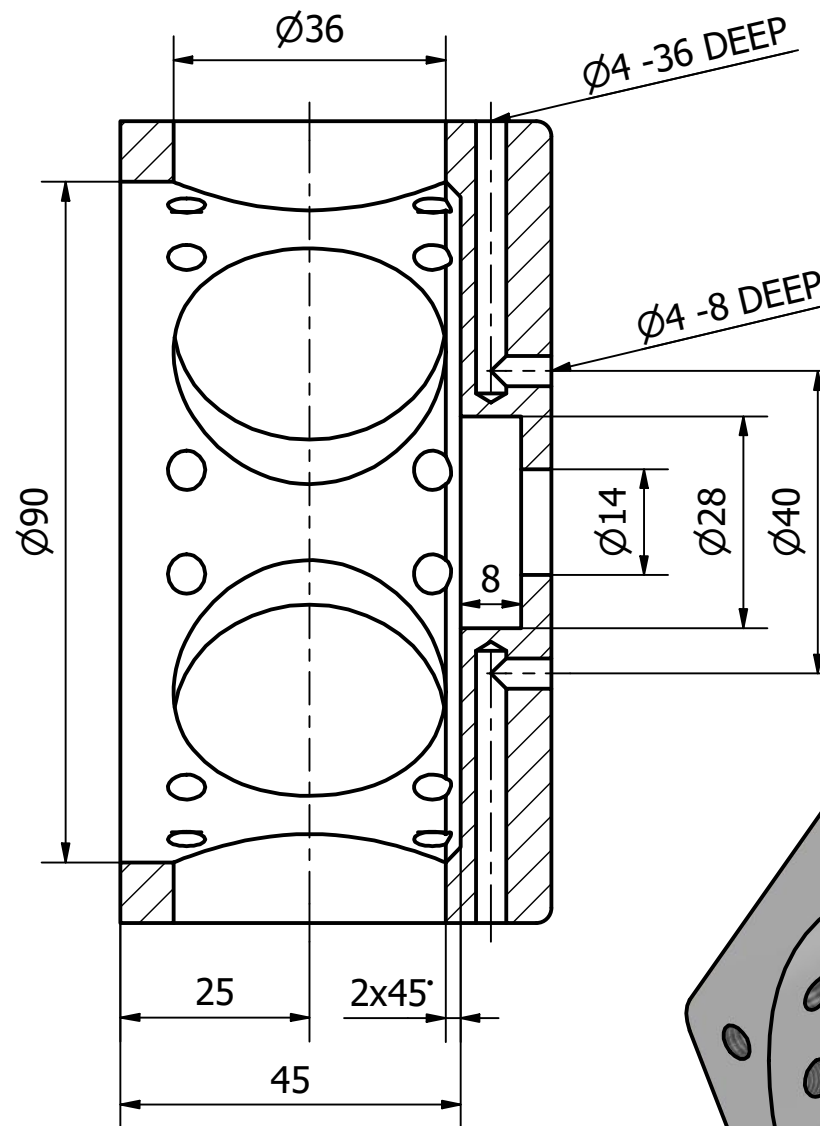
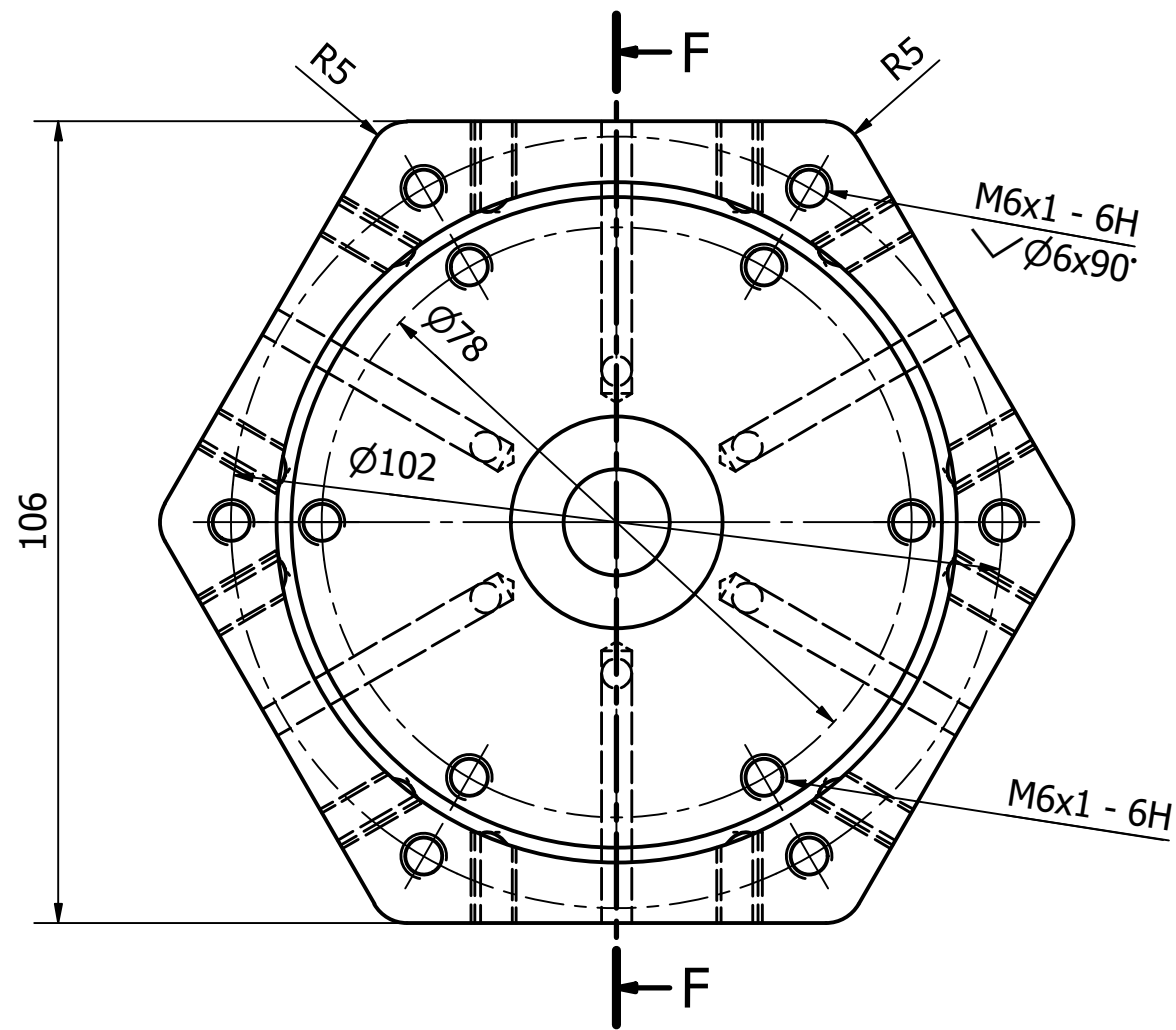
SECTION E-E ( 1 : 1 )



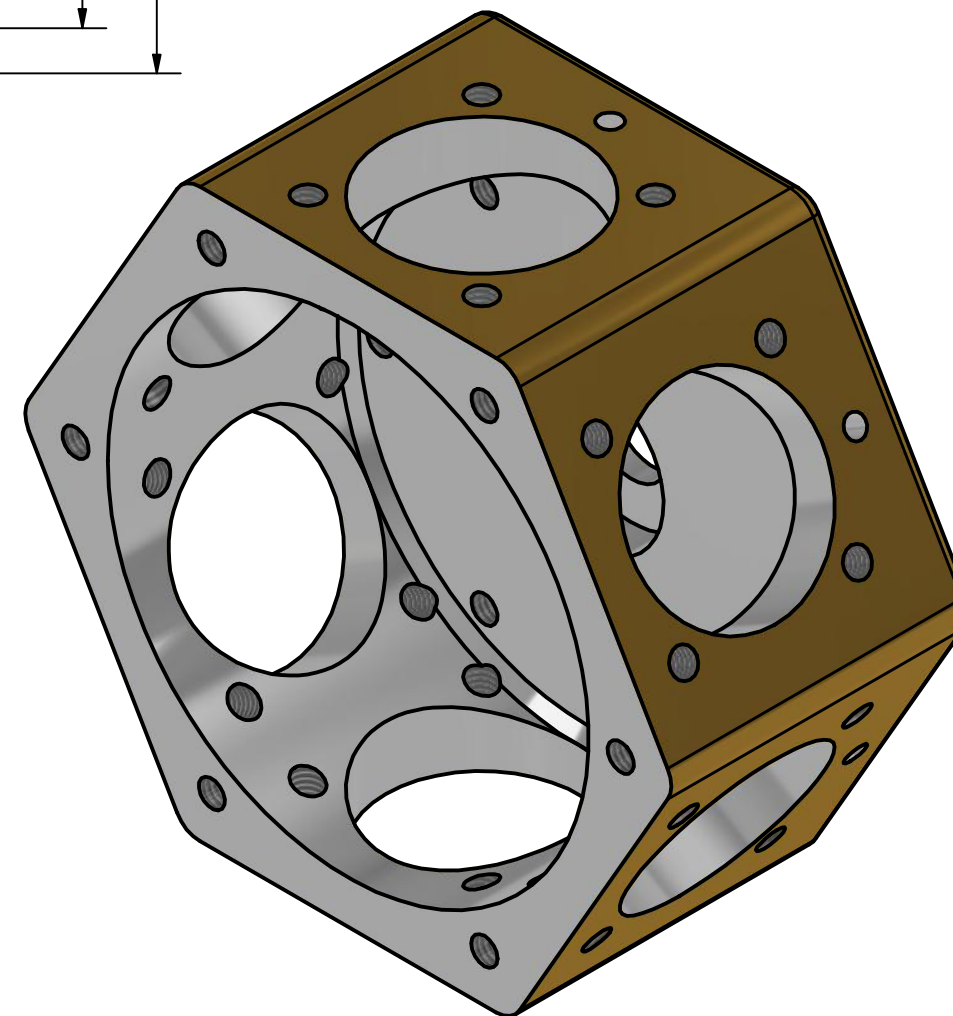
ISOMETRIC ( 1 : 1 )

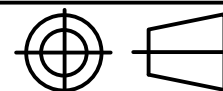

	DRN: Buster Kruger	6 CYLINDER RADIAL ENGINE	
	CKD:	Crankcase Cover	
	APPD:		
MATERIAL: Aluminium	ISSUED: 10/11/20	SIZE A3	DRAWING NUMBER 1
FINISH: Machined		SCALE: as noted	SHEET: 5 of 25

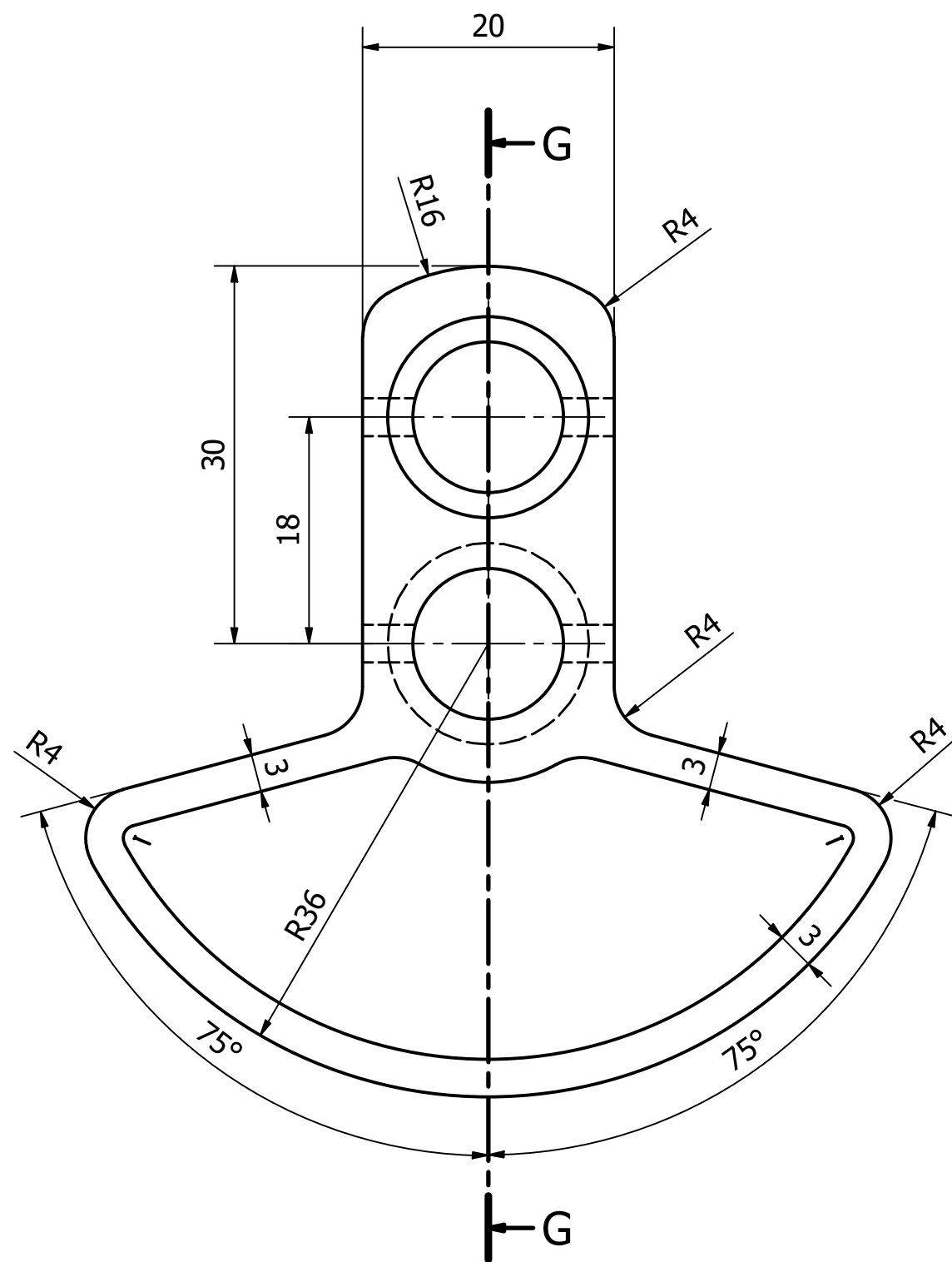




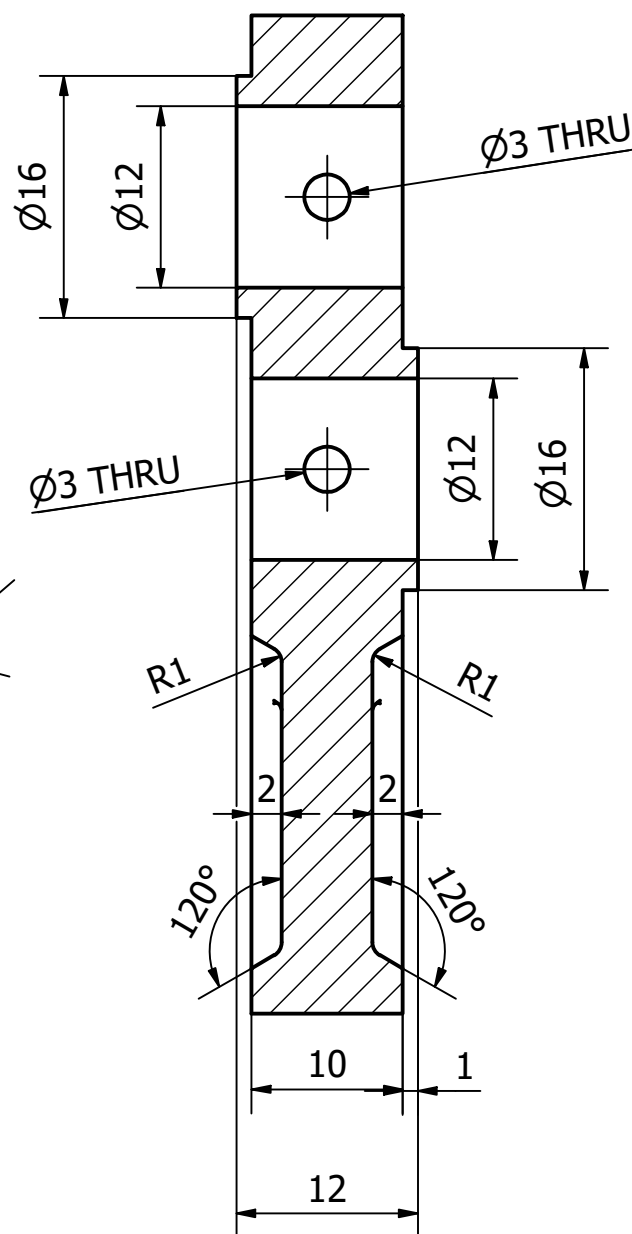
Crankcase



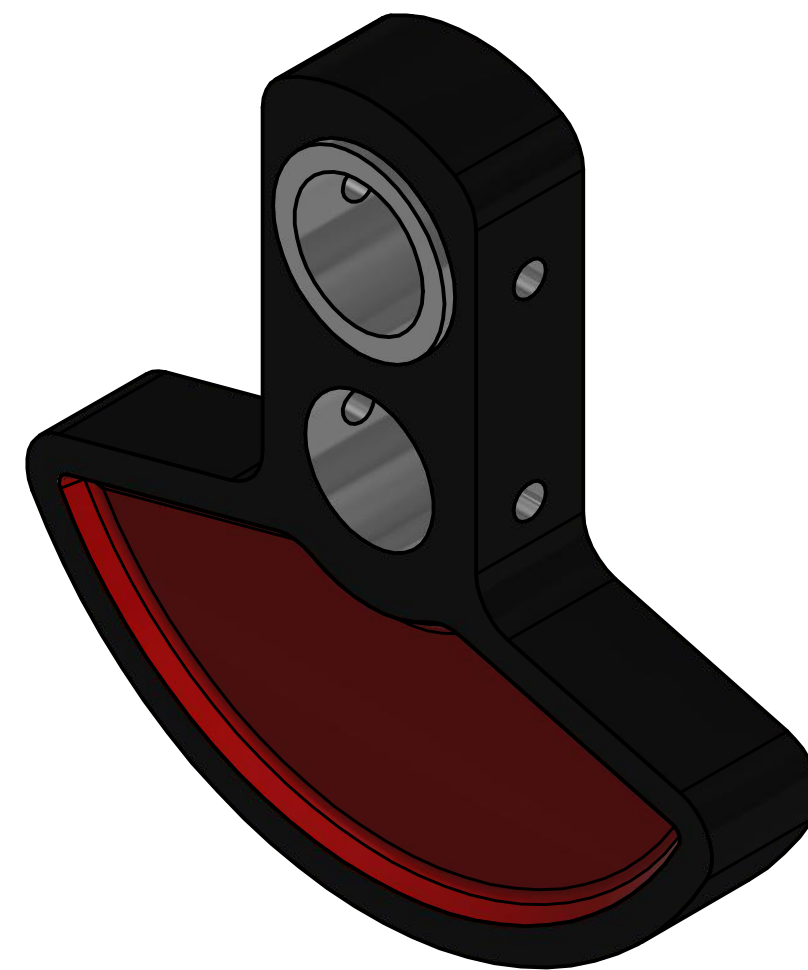
	DRN: Buster Kruger	6 CYLINDER RADIAL ENGINE	
	CKD:	Crankcase	
MATERIAL: Aluminium	APPD:		
FINISH: Machined	ISSUED: 10/11/20	SIZE A3	DRAWING NUMBER 1
		SCALE: as noted	SHEET: 7 of 25



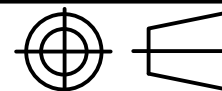

FRONT ( 2 : 1 )

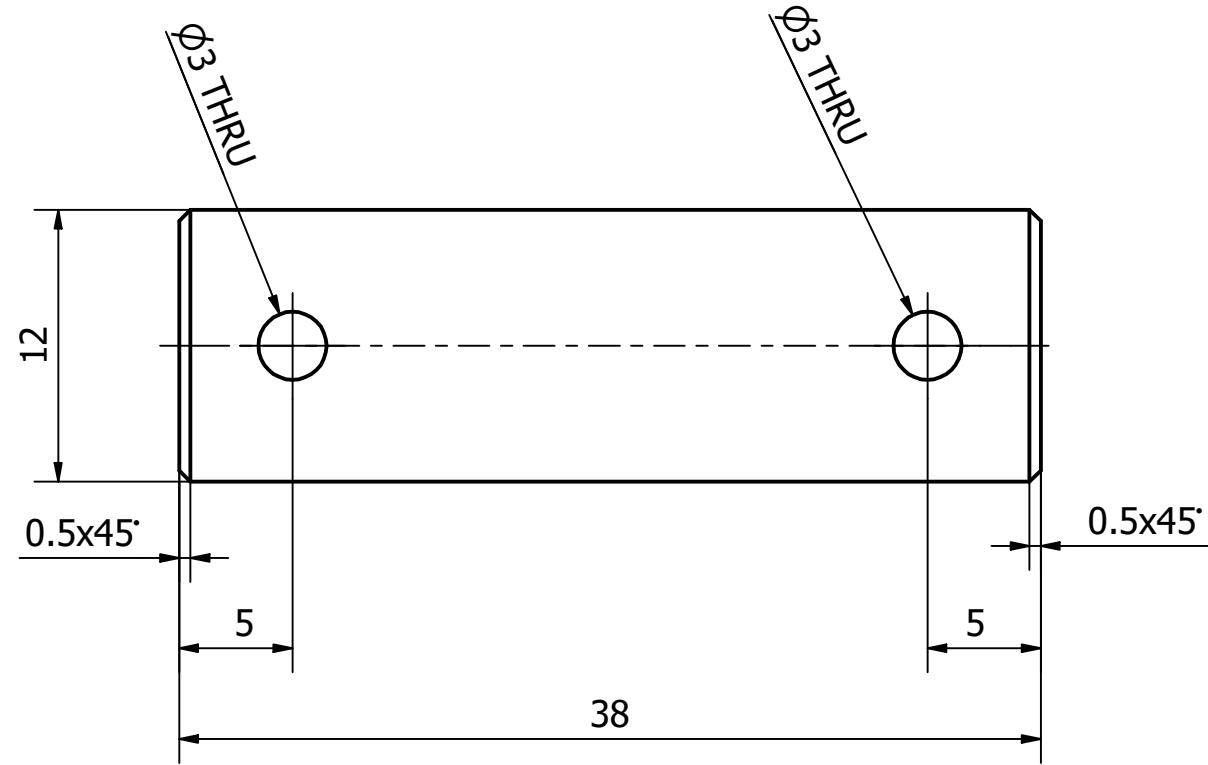


SECTION G-G ( 2 : 1 )

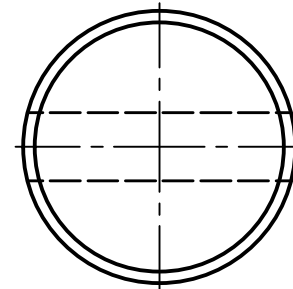


ISOMETRIC ( 2 : 1 )

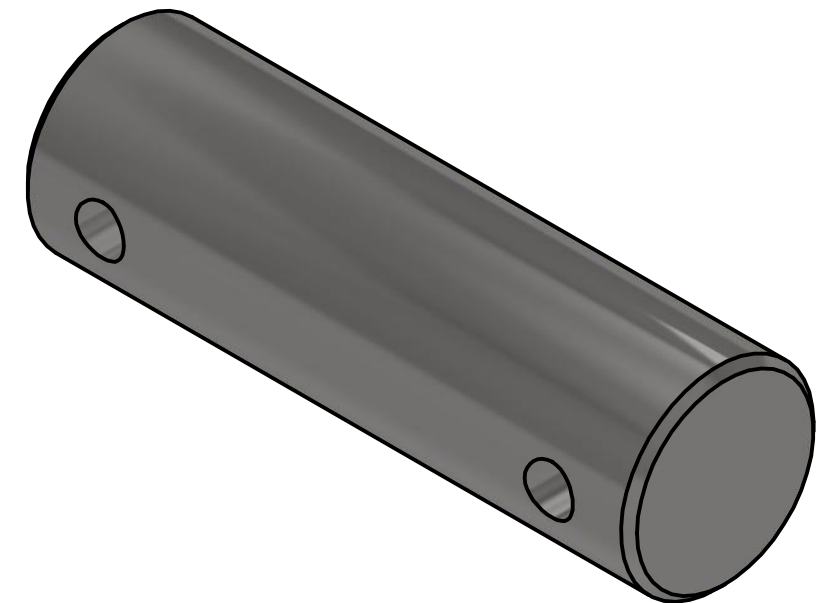
	DRN: Buster Kruger	6 CYLINDER RADIAL ENGINE	
	CKD:	Crankshaft Counterweight	
	APPD:		
FINISH:	ISSUED: 10/11/20	SIZE A3	DRAWING NUMBER 1
Machined		SCALE: as noted	SHEET: 8 of 25



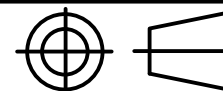

FRONT ( 3 : 1 )

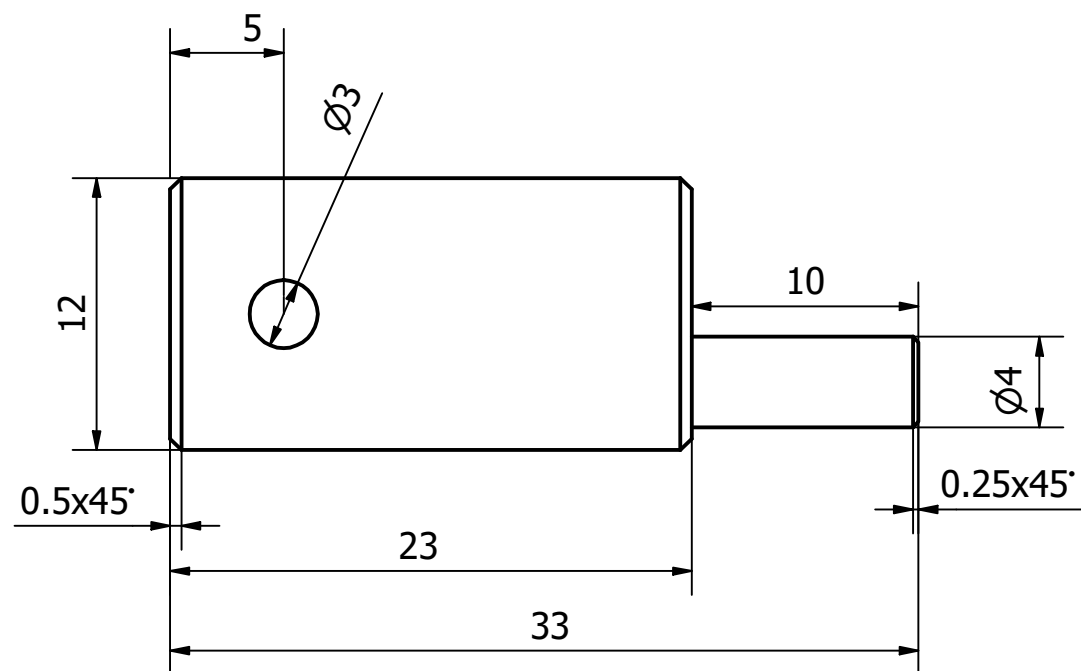


SIDE ( 3 : 1 )

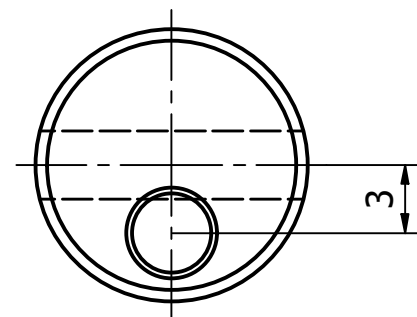


ISOMETRIC ( 3 : 1 )

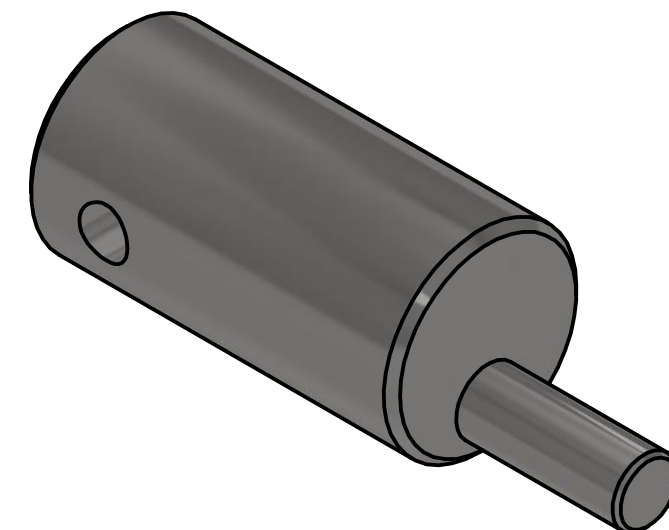
	DRN: Buster Kruger	6 CYLINDER RADIAL ENGINE	
	CKD:	Crankshaft Pin	
	APPD:		
MATERIAL: Stainless Steel	ISSUED: 10/11/20	SIZE A3	DRAWING NUMBER 1
FINISH: Machined		SCALE: as noted	SHEET: 9 of 25




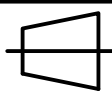

FRONT ( 3 : 1 )



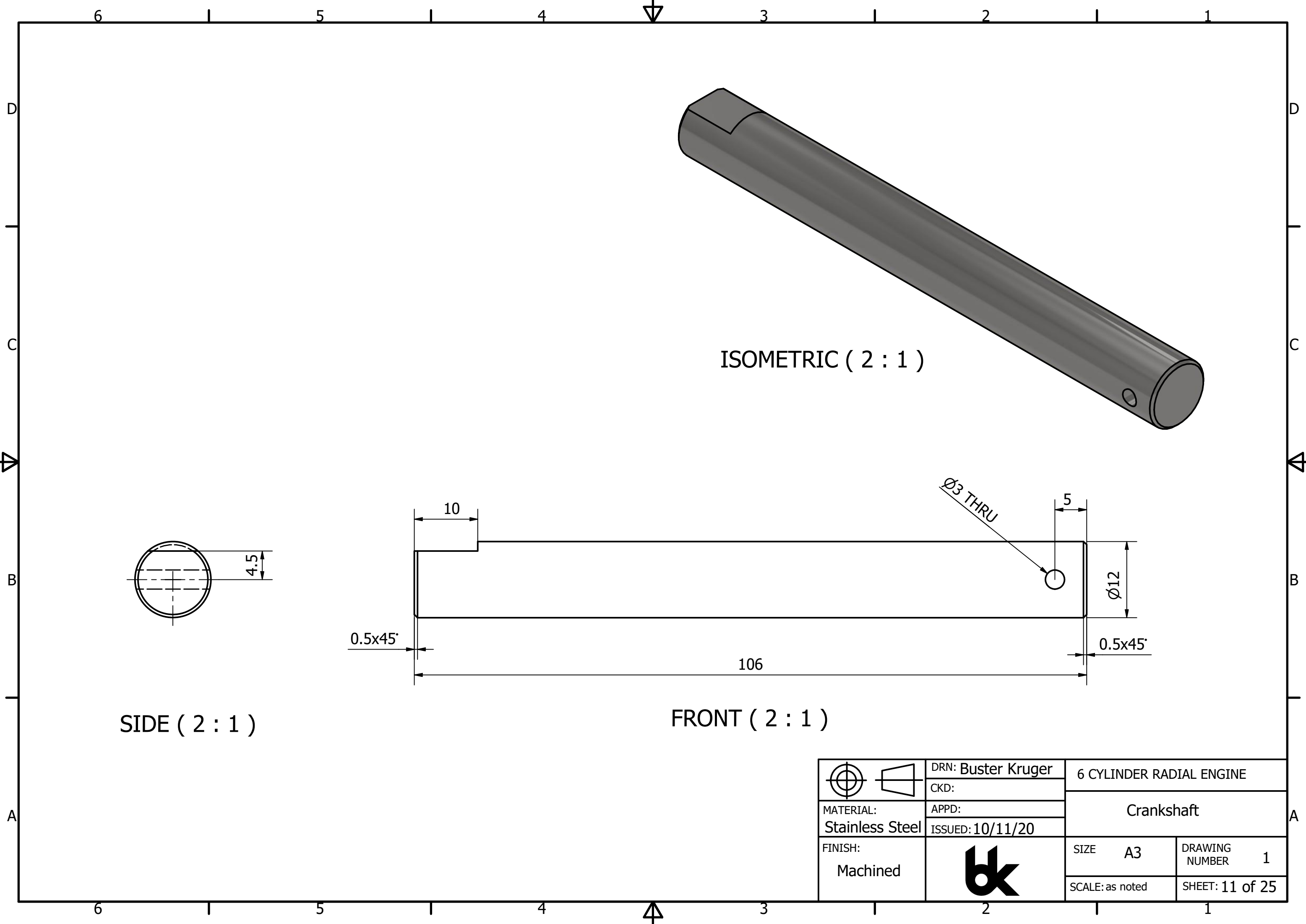
SIDE ( 3 : 1 )



ISOMETRIC ( 3 : 1 )

 	DRN: Buster Kruger	6 CYLINDER RADIAL ENGINE	
	CKD:	Crankshaft Valve	
	APPD:		
MATERIAL: Stainless Steel	ISSUED: 10/11/20	SIZE A3	DRAWING NUMBER 1
FINISH: Machined		SCALE: as noted	SHEET: 10 of 25



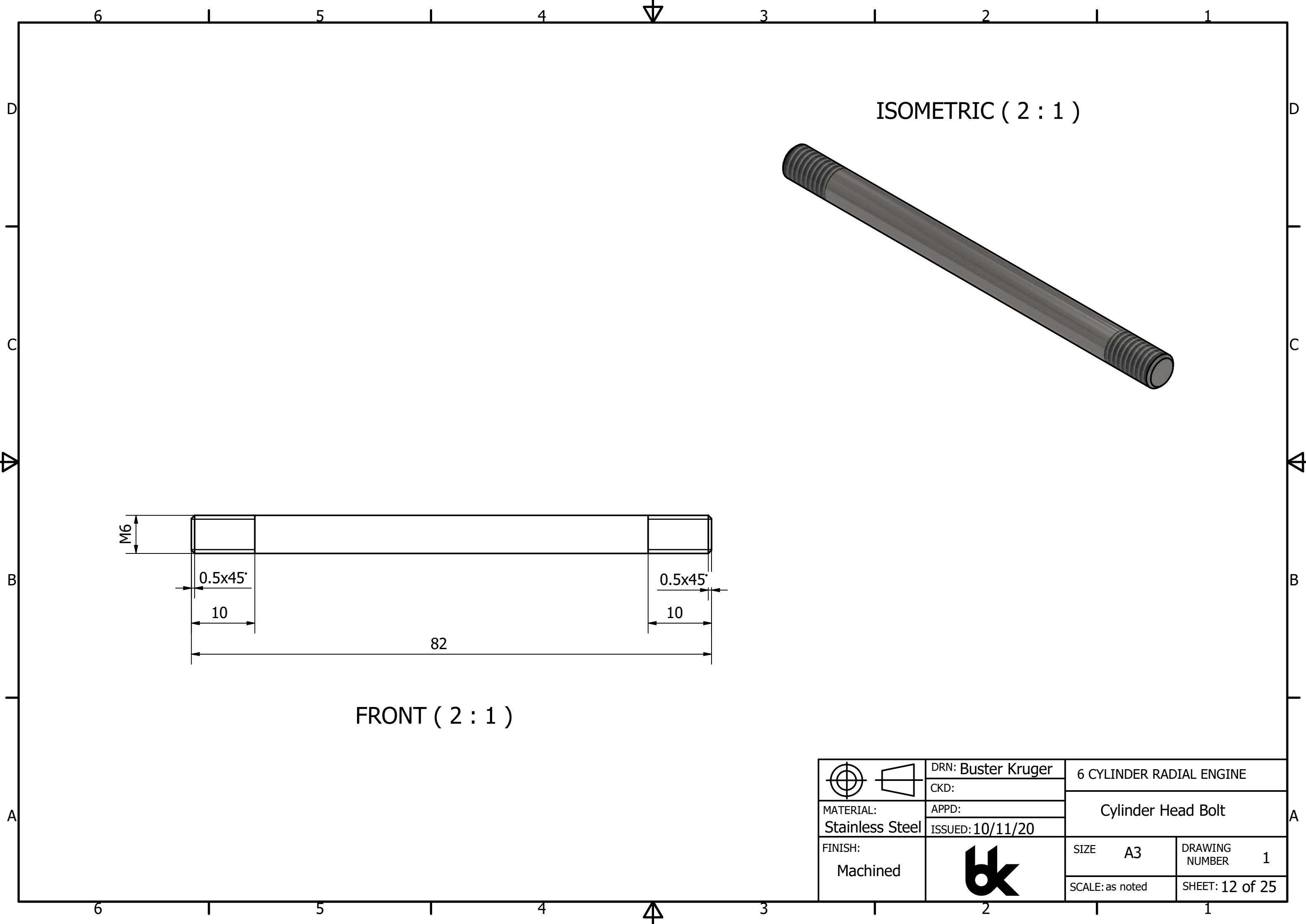



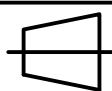

ISOMETRIC ( 2 : 1 )

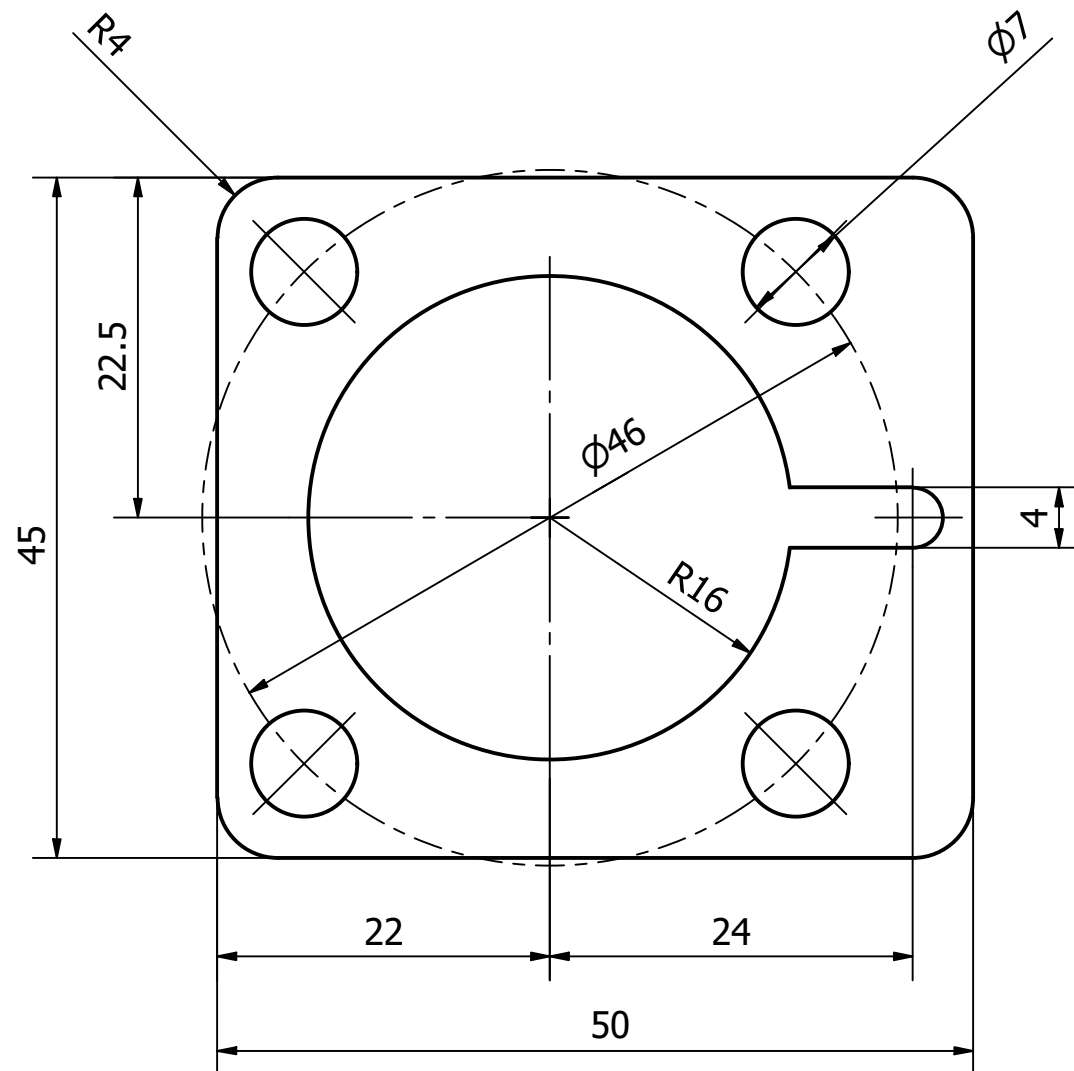
SIDE ( 2 : 1 )

FRONT ( 2 : 1 )

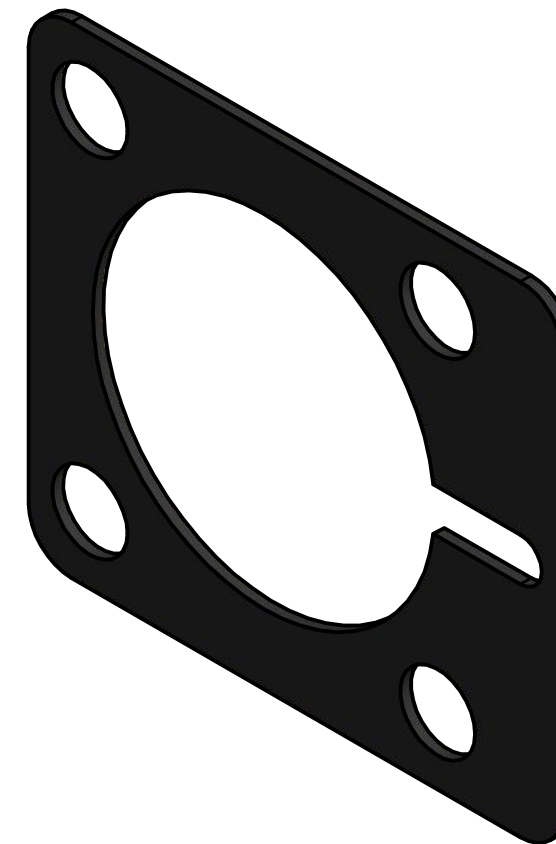
	DRN: Buster Kruger	6 CYLINDER RADIAL ENGINE	
	CKD:	Crankshaft	
	APPD:		
MATERIAL: Stainless Steel	ISSUED: 10/11/20	SIZE A3	DRAWING NUMBER 1
FINISH: Machined		SCALE: as noted	SHEET: 11 of 25



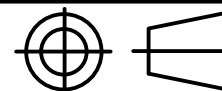

 	DRN: Buster Kruger	6 CYLINDER RADIAL ENGINE	
	CKD:	Cylinder Head Bolt	
	APPD:		
MATERIAL: Stainless Steel	ISSUED: 10/11/20	SIZE A3	DRAWING NUMBER 1
FINISH: Machined		SCALE: as noted	SHEET: 12 of 25

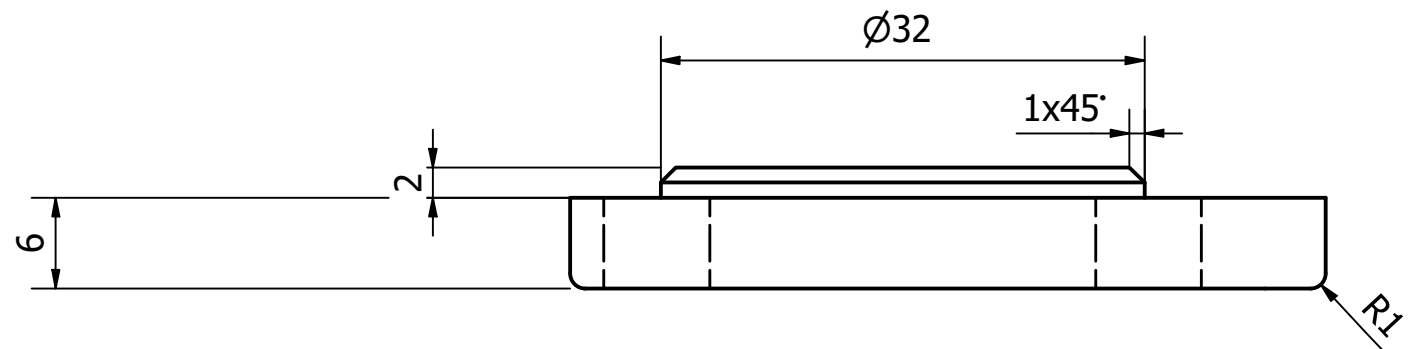


FRONT ( 2 : 1 )

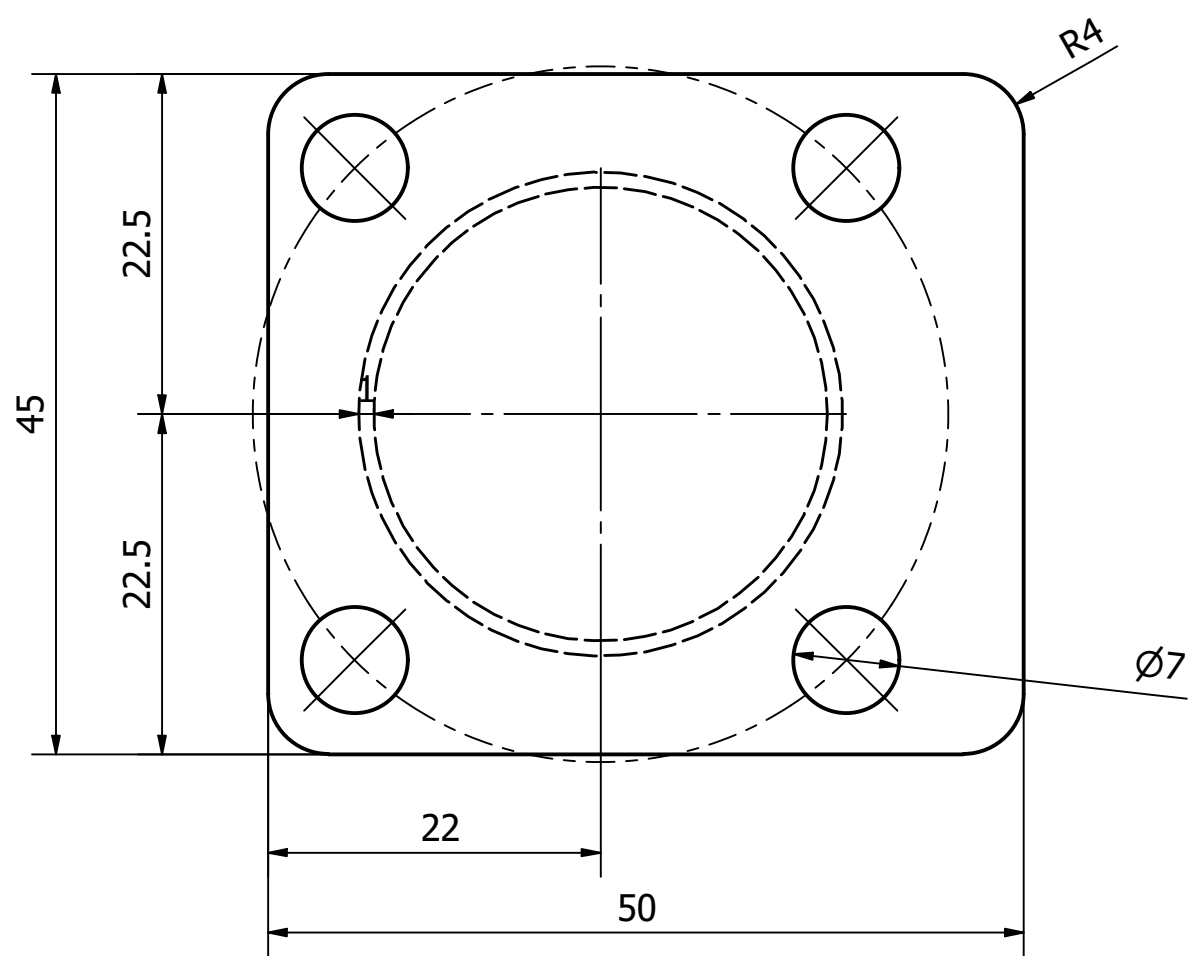


ISOMETRIC ( 2 : 1 )

	DRN: Buster Kruger	6 CYLINDER RADIAL ENGINE	
	CKD:	Cylinder Head Gasket	
	APPD:		
MATERIAL: Rubber	ISSUED: 10/11/20	SIZE A3	DRAWING NUMBER 1
FINISH:		SCALE: as noted	SHEET: 13 of 25

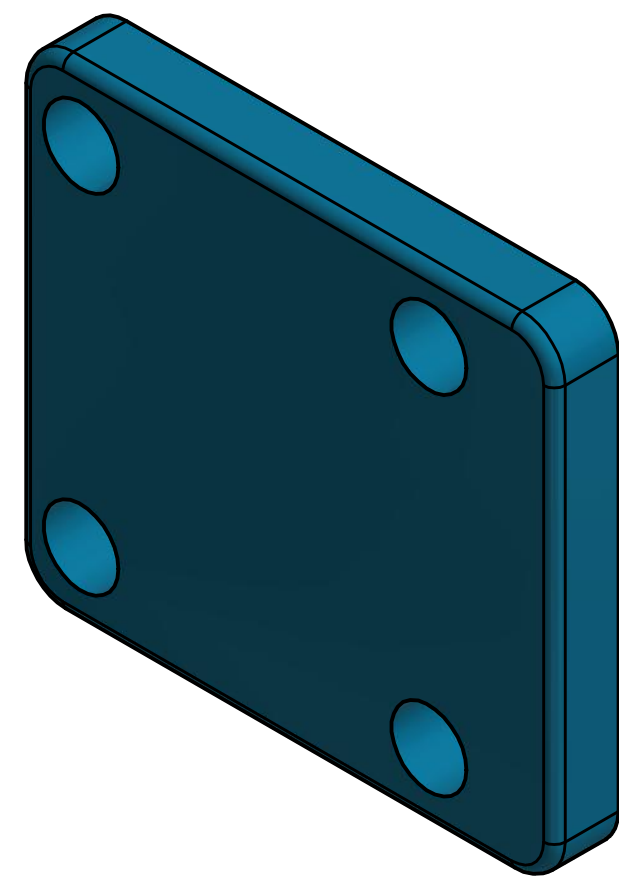


TOP ( 2 : 1 )


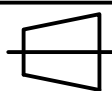



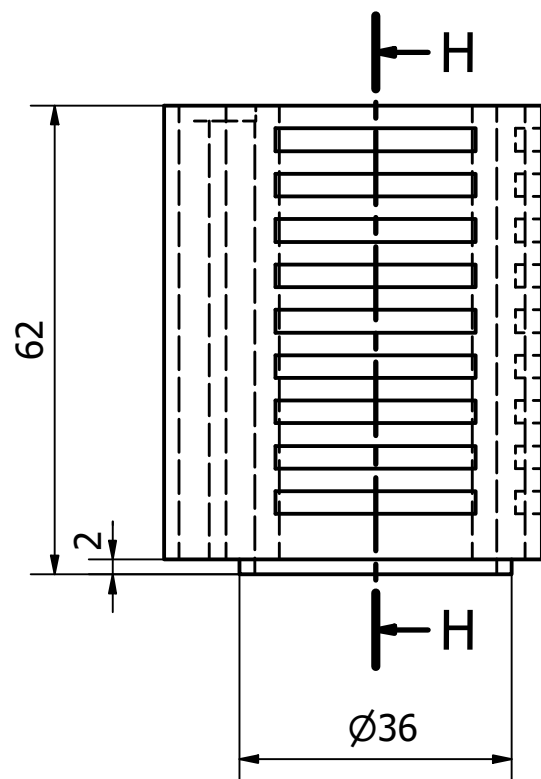
FRONT ( 2 : 1 )

Cylinder Head

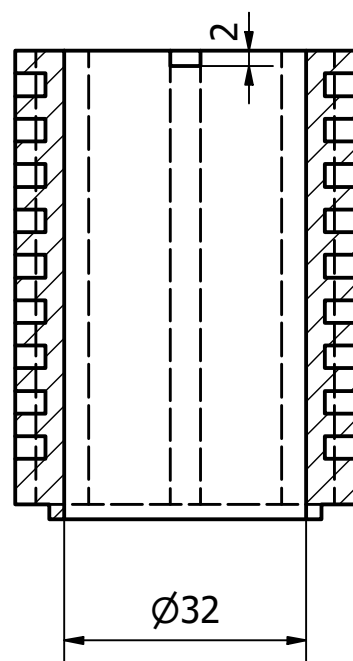


ISOMETRIC ( 2 : 1 )

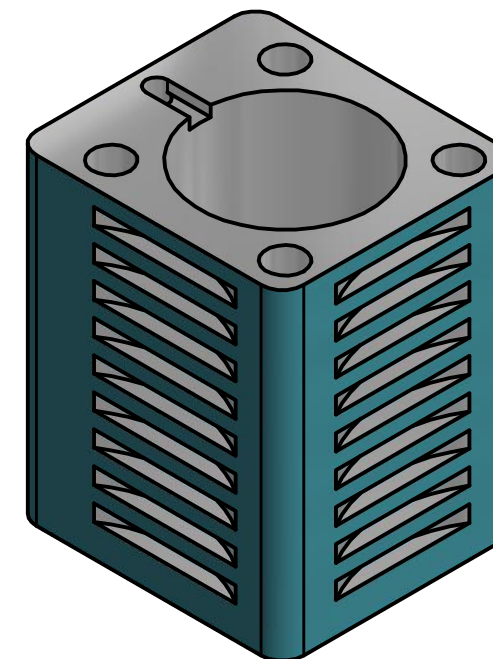
 	DRN: Buster Kruger	6 CYLINDER RADIAL ENGINE	
	CKD:	Cylinder Head	
	APPD:		
MATERIAL: Aluminium	ISSUED: 10/11/20	SIZE A3	DRAWING NUMBER 1
FINISH: Machined		SCALE: as noted	SHEET: 14 of 25



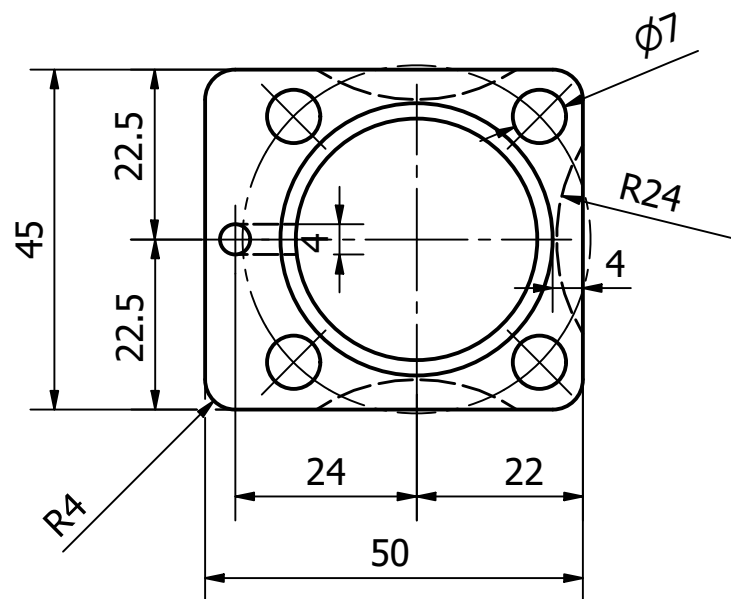
FRONT ( 1 : 1 )



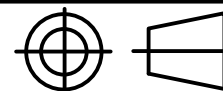

SECTION H-H ( 1 : 1 )

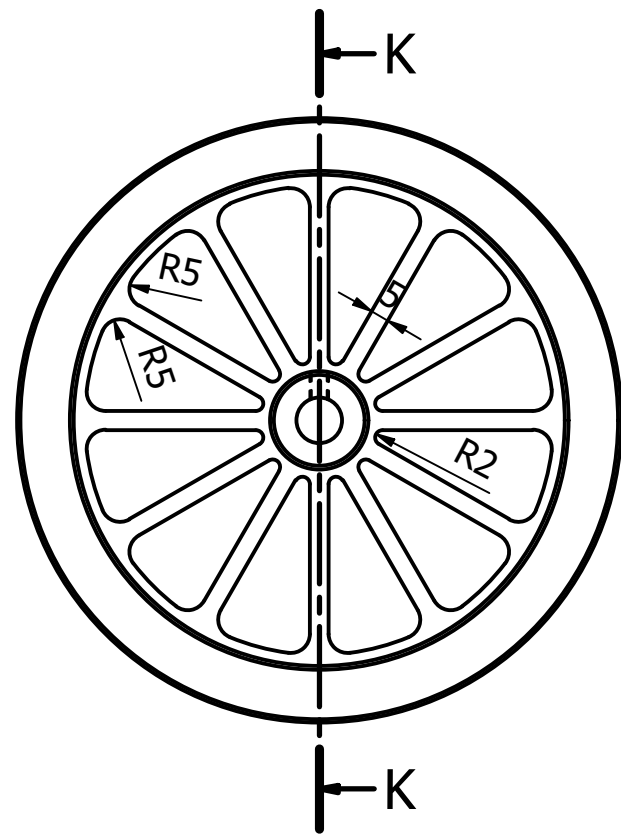


ISOMETRIC ( 1 : 1 )

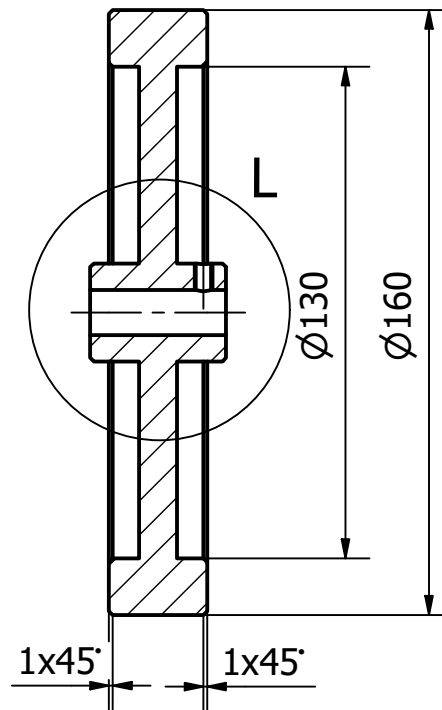


BOTTOM ( 1 : 1 )

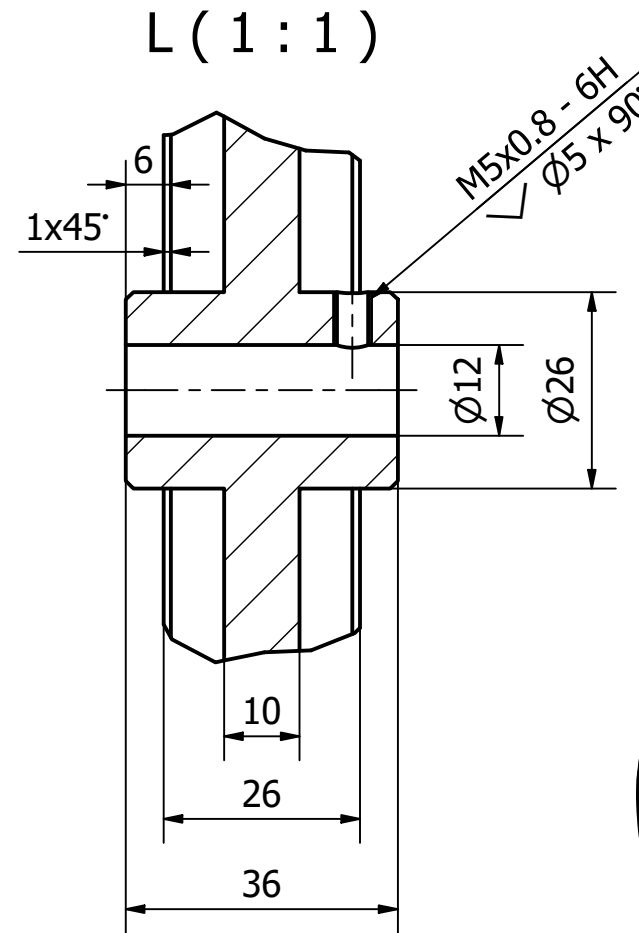
	DRN: Buster Kruger	6 CYLINDER RADIAL ENGINE	
	CKD:	Cylinder	
	APPD:		
MATERIAL: Aluminium	ISSUED: 10/11/20	SIZE A3	DRAWING NUMBER 1
FINISH: Machined		SCALE: as noted	SHEET: 15 of 25



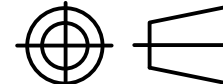

FRONT ( 1 : 2 )



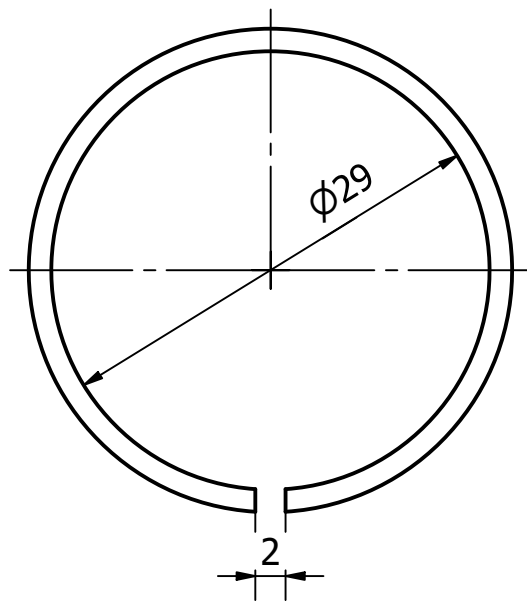
SECTION K-K ( 1 : 2 )



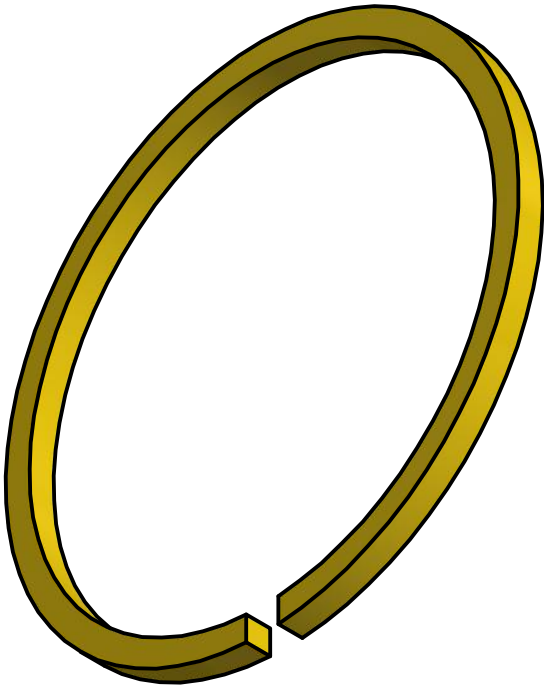
ISOMETRIC ( 1 : 2 )

	DRN: Buster Kruger	6 CYLINDER RADIAL ENGINE	
	CKD:	Flywheel	
	APPD:		
MATERIAL: Stainless Steel	ISSUED: 10/11/20	SIZE A3	DRAWING NUMBER 1
FINISH: Machined		SCALE: as noted	SHEET: 16 of 25

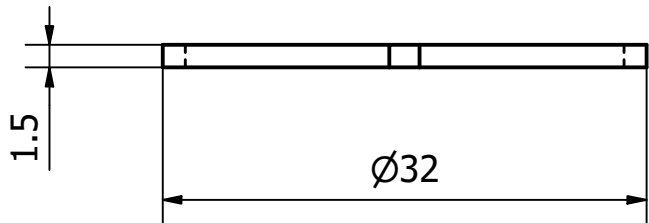




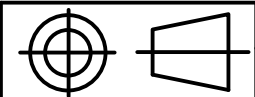

FRONT ( 2 : 1 )

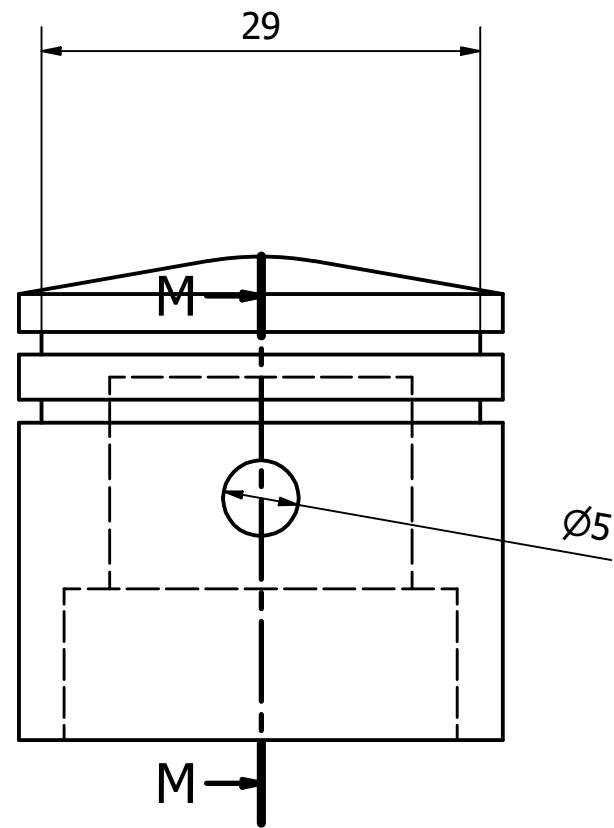


ISOMETRIC ( 3 : 1 )

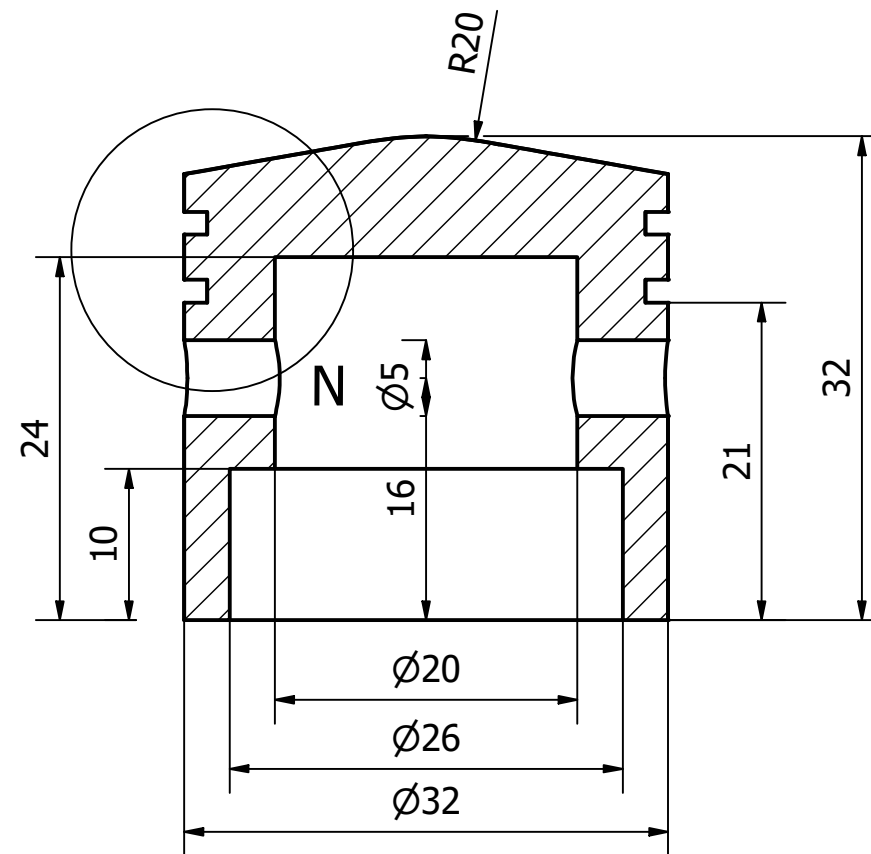


BOTTOM ( 2 : 1 )

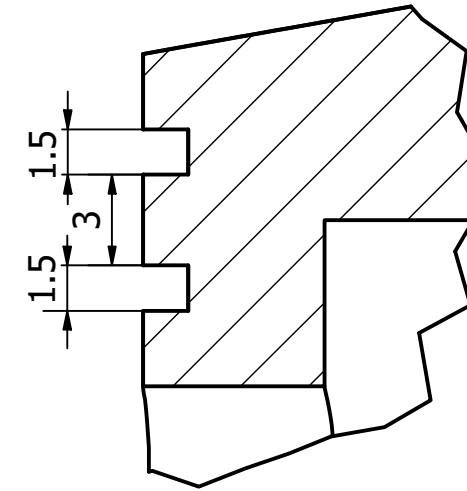
	DRN: Buster Kruger	6 CYLINDER RADIAL ENGINE	
	CKD:	Piston Compression Ring	
	APPD:		
MATERIAL: Stainless Steel	ISSUED: 10/11/20	SIZE A3	DRAWING NUMBER 1
FINISH: Machined		SCALE: as noted	SHEET: 17 of 25



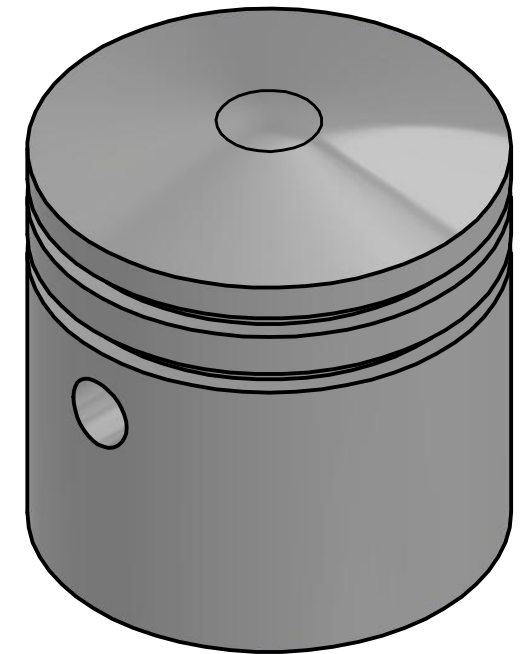
FRONT ( 2 : 1 )



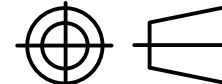

M-M ( 2 : 1 )

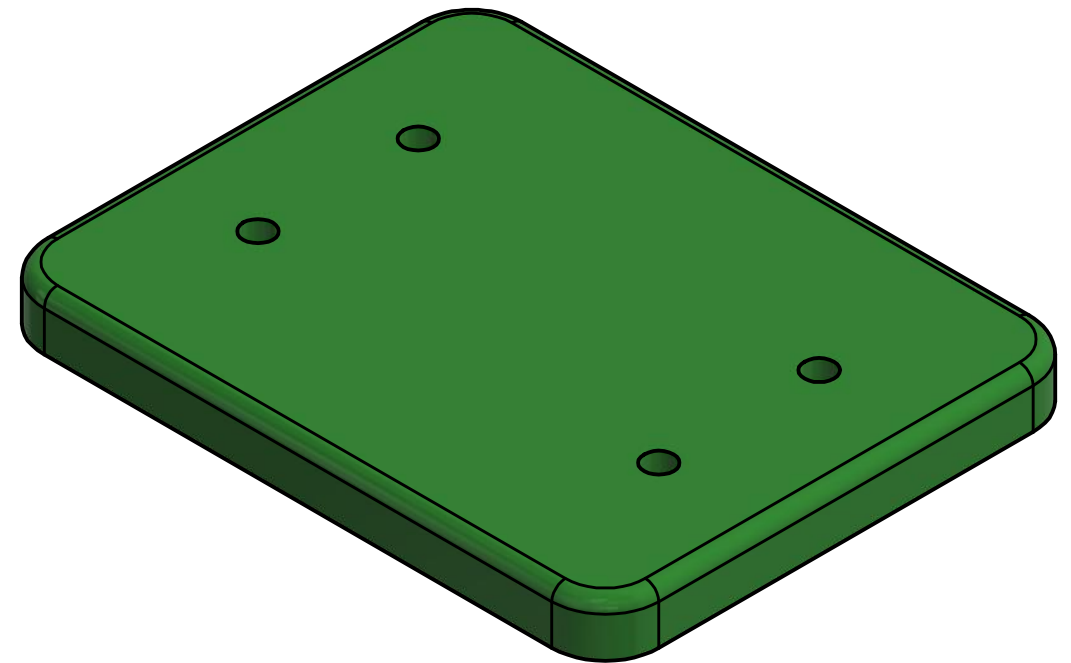
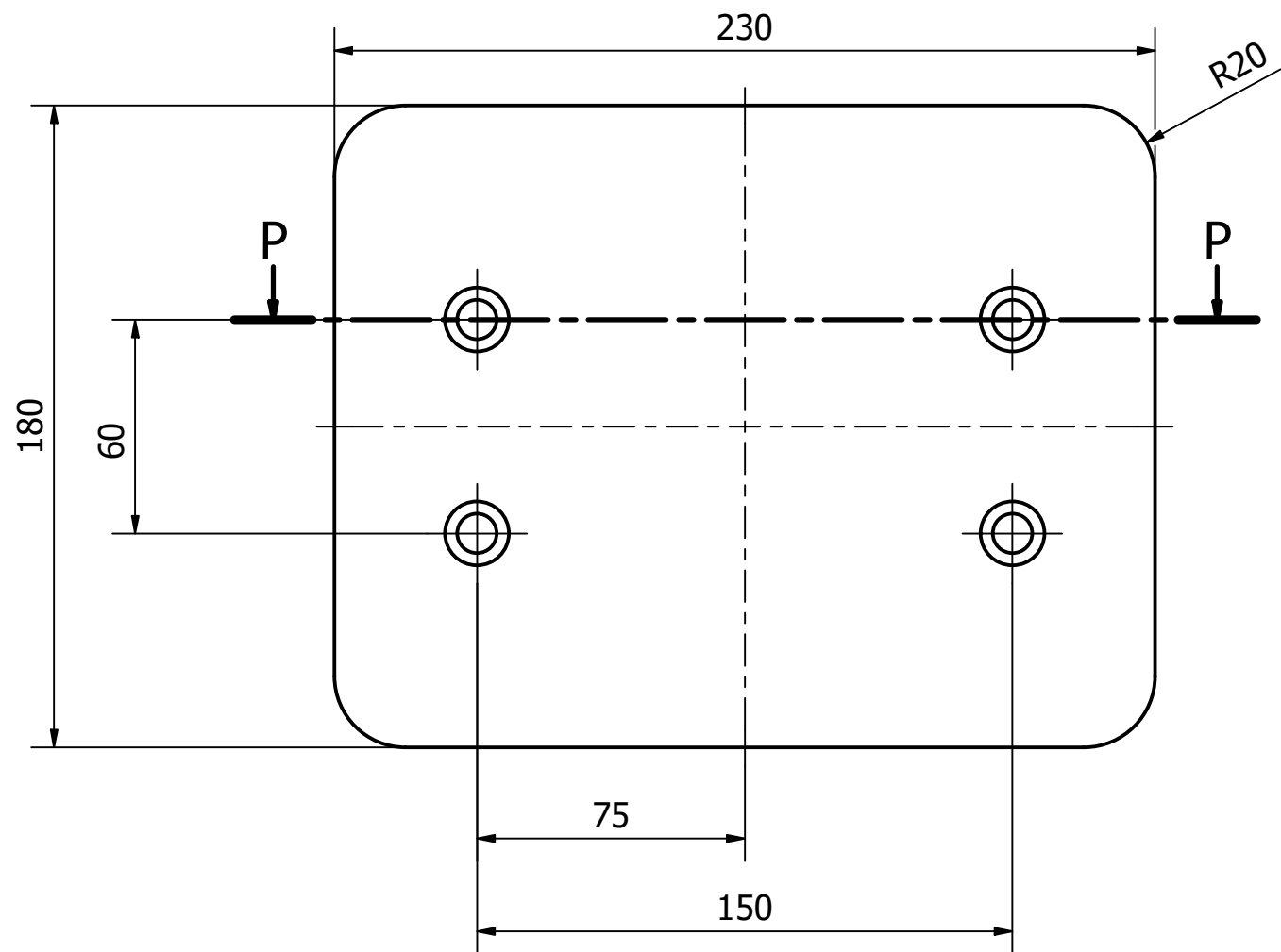
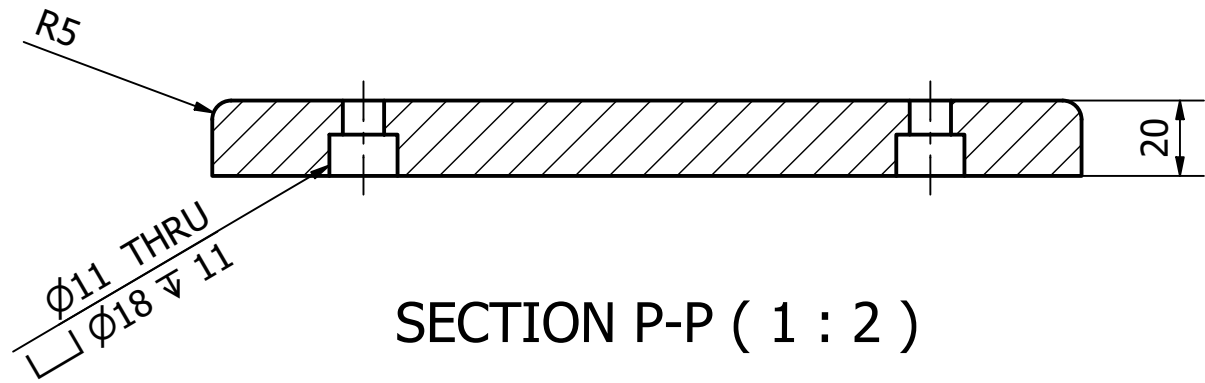
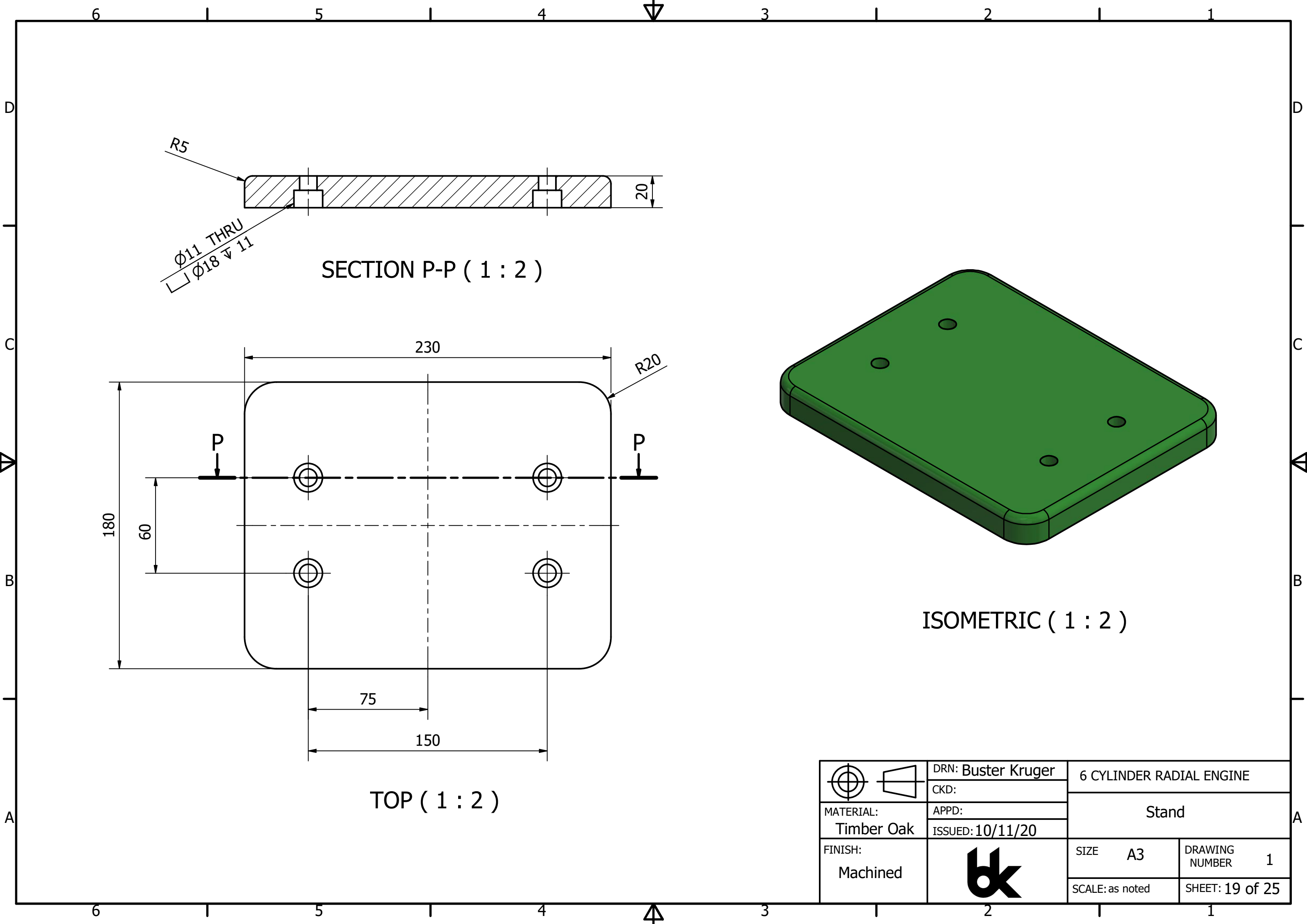



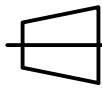

N ( 4 : 1 )



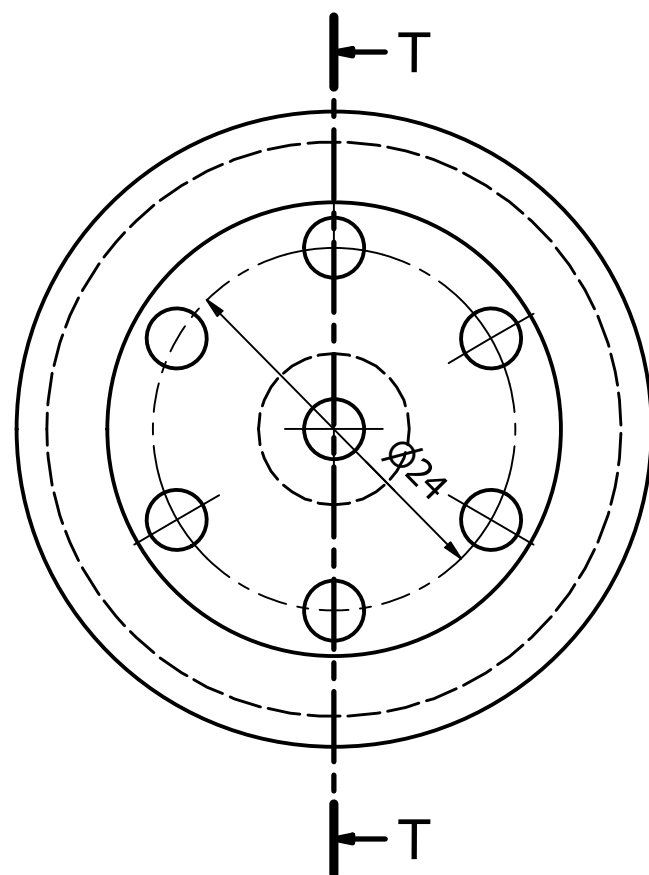
ISOMETRIC ( 2 : 1 )

	DRN: Buster Kruger	6 CYLINDER RADIAL ENGINE	
	CKD:	Piston	
	APPD:		
MATERIAL: Aluminium	ISSUED: 10/11/20	SIZE A3	DRAWING NUMBER 1
FINISH: Machined		SCALE: as noted	SHEET: 18 of 25

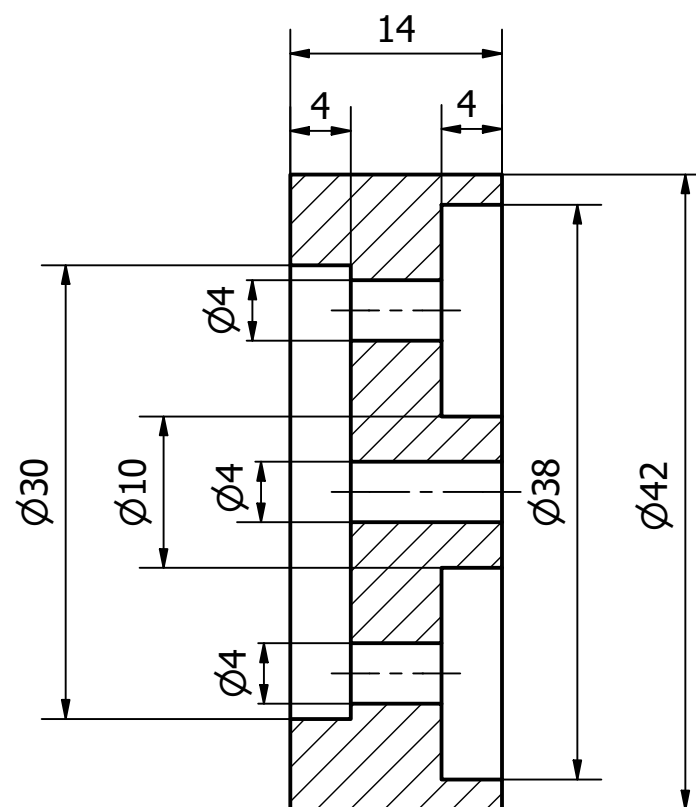


 	DRN: Buster Kruger	6 CYLINDER RADIAL ENGINE	
	CKD:	Stand	
	APPD:		
MATERIAL: Timber Oak	ISSUED: 10/11/20	SIZE A3	DRAWING NUMBER 1
FINISH: Machined		SCALE: as noted	SHEET: 19 of 25

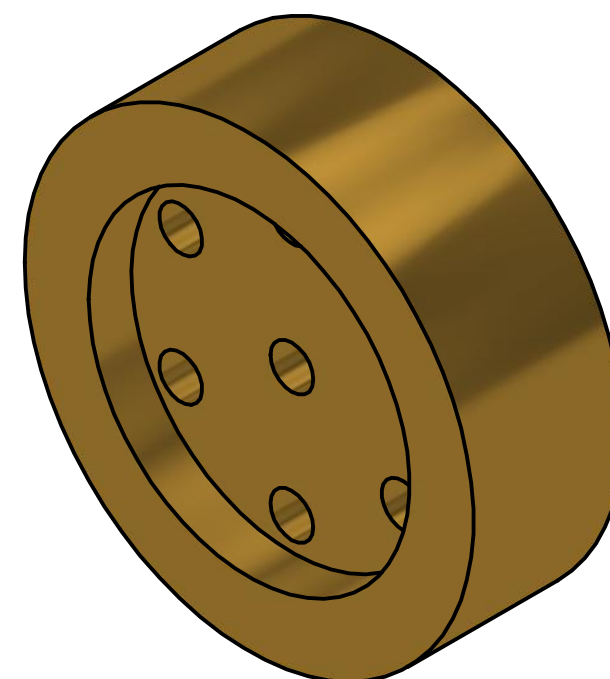




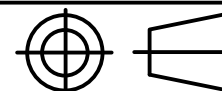

FRONT ( 2 : 1 )



SECTION T-T ( 2 : 1 )



ISOMETRIC ( 2 : 1 )

	DRN: Buster Kruger	6 CYLINDER RADIAL ENGINE	
	CKD:	Valve	
	APPD:		
MATERIAL: Brass	ISSUED: 10/11/20	SIZE A3	DRAWING NUMBER 1
FINISH: Machined		SCALE: as noted	SHEET: 21 of 25